

PBFE Polyclonal Antibody

Catalog # AP71793

Product Information

Application	WB, IHC-P
Primary Accession	Q08426
Reactivity	Human, Rat
Host	Rabbit
Clonality	Polyclonal
Calculated MW	79495

Additional Information

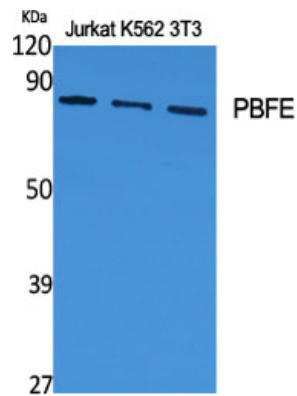
Gene ID	1962
Other Names	EHHADH; ECHD; Peroxisomal bifunctional enzyme; PBE; PBFE
Dilution	WB~~Western Blot: 1/500 - 1/2000. Immunohistochemistry: 1/100 - 1/300. ELISA: 1/10000. Not yet tested in other applications. IHC-P~~N/A
Format	Liquid in PBS containing 50% glycerol, 0.5% BSA and 0.09% (W/V) sodium azide.
Storage Conditions	-20°C

Protein Information

Name	EHHADH (HGNC:3247)
Synonyms	ECHD
Function	<p>Peroxisomal trifunctional enzyme possessing 2-enoyl-CoA hydratase, 3-hydroxyacyl-CoA dehydrogenase, and delta 3, delta 2-enoyl- CoA isomerase activities. Catalyzes two of the four reactions of the long chain fatty acids peroxisomal beta-oxidation pathway (By similarity). Can also use branched-chain fatty acids such as 2-methyl- 2E-butenoyl-CoA as a substrate, which is hydrated into (2S,3S)-3- hydroxy-2-methylbutanoyl-CoA (By similarity). Optimal isomerase for 2,5 double bonds into 3,5 form isomerization in a range of enoyl-CoA species (Probable). Also able to isomerize both 3-cis and 3-trans double bonds into the 2-trans form in a range of enoyl-CoA species (By similarity). With HSD17B4, catalyzes the hydration of trans-2-enoyl-CoA and the dehydrogenation of 3-hydroxyacyl-CoA, but with opposite chiral specificity (PubMed:15060085). Regulates the amount of medium-chain dicarboxylic fatty acids which are essential regulators of all fatty acid oxidation pathways (By similarity). Also involved in the degradation of long-chain dicarboxylic acids through peroxisomal beta- oxidation (PubMed:15060085).</p>

Cellular Location	Peroxisome.
Tissue Location	Liver and kidney. Strongly expressed in the terminal segments of the proximal tubule. Lower amounts seen in the brain.

Images



Western Blot analysis of various cells using PBFE Polyclonal Antibody



Western Blot analysis of A549 cells using PBFE Polyclonal Antibody

Please note: All products are 'FOR RESEARCH USE ONLY. NOT FOR USE IN DIAGNOSTIC OR THERAPEUTIC PROCEDURES'.