

Twinfilin-2 (PTK9L) Antibody (C-term)

Purified Rabbit Polyclonal Antibody (Pab)

Catalog # AP7180a

Product Information

Application	WB, E
Primary Accession	Q6IBS0
Reactivity	Human
Host	Rabbit
Clonality	Polyclonal
Isotype	Rabbit IgG
Calculated MW	39548
Antigen Region	320-349

Additional Information

Gene ID	11344
Other Names	Twinfilin-2, A6-related protein, hA6RP, Protein tyrosine kinase 9-like, Twinfilin-1-like protein, TWF2, PTK9L
Target/Specificity	This Twinfilin-2 (PTK9L) antibody is generated from rabbits immunized with a KLH conjugated synthetic peptide between 320-349 amino acids from the C-terminal region of human Twinfilin-2 (PTK9L).
Dilution	WB~~1:1000 E~~Use at an assay dependent concentration.
Format	Purified polyclonal antibody supplied in PBS with 0.09% (W/V) sodium azide. This antibody is prepared by Saturated Ammonium Sulfate (SAS) precipitation followed by dialysis against PBS.
Storage	Maintain refrigerated at 2-8°C for up to 2 weeks. For long term storage store at -20°C in small aliquots to prevent freeze-thaw cycles.
Precautions	Twinfilin-2 (PTK9L) Antibody (C-term) is for research use only and not for use in diagnostic or therapeutic procedures.

Protein Information

Name	TWF2
Synonyms	PTK9L
Function	Actin-binding protein involved in motile and morphological processes. Inhibits actin polymerization, likely by sequestering G- actin. By capping the barbed ends of filaments, it also regulates motility. Seems to play an

important role in clathrin-mediated endocytosis and distribution of endocytic organelles. May play a role in regulating the mature length of the middle and short rows of stereocilia (By similarity).

Cellular Location

Cytoplasm, cytoskeleton. Cytoplasm, perinuclear region. Cell projection, stereocilium. Note=Perinuclear and G-actin-rich cortical actin structure sublocalization

Tissue Location

Ubiquitously expressed (at protein level).

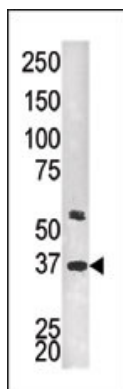
Background

The protein encoded by this gene was identified by its interaction with the catalytic domain of protein kinase C-zeta. The encoded protein contains an actin-binding site and an ATP-binding site. It is most closely related to twinfilin (PTK9), a conserved actin monomer-binding protein.

References

Rohwer, A., et al., Eur. J. Biochem. 263(2):518-525 (1999).

Images



The anti-PTK9L Pab (Cat. #AP7180a) is used in Western blot to detect PTK9L in HEPG2 tissue lysate.

Citations

- [MyosinVIIa interacts with Twinfilin-2 at the tips of mechanosensory stereocilia in the inner ear.](#)

Please note: All products are 'FOR RESEARCH USE ONLY. NOT FOR USE IN DIAGNOSTIC OR THERAPEUTIC PROCEDURES'.