

PDIK1L Polyclonal Antibody

Catalog # AP71825

Product Information

Application	WB, IHC-P
Primary Accession	Q8N165
Reactivity	Human, Mouse
Host	Rabbit
Clonality	Polyclonal
Calculated MW	38546

Additional Information

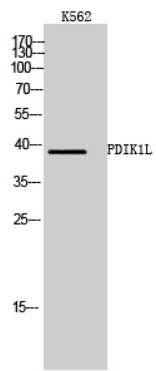
Gene ID	149420
Other Names	PDIK1L; CLIK1L; Serine/threonine-protein kinase PDIK1L; PDLIM1-interacting kinase 1-like
Dilution	WB~~Western Blot: 1/500 - 1/2000. Immunohistochemistry: 1/100 - 1/300. ELISA: 1/40000. Not yet tested in other applications. IHC-P~~N/A
Format	Liquid in PBS containing 50% glycerol, 0.5% BSA and 0.09% (W/V) sodium azide.
Storage Conditions	-20°C

Protein Information

Name	PDIK1L
Synonyms	CLIK1L
Cellular Location	Nucleus.
Tissue Location	Expressed in liver, kidney, pancreas, spleen, thymus and prostate.

Images

Western Blot analysis of K562 cells using PDIK1L Polyclonal Antibody cells nucleus extracted by Minute TM Cytoplasmic and Nuclear Fractionation kit (SC-003, Invent biotech, MN, USA).



Please note: All products are 'FOR RESEARCH USE ONLY. NOT FOR USE IN DIAGNOSTIC OR THERAPEUTIC PROCEDURES'.