

# PDZ-RhoGEF Polyclonal Antibody

Catalog # AP71835

## Product Information

---

<b>Application</b>	WB, IHC-P
<b>Primary Accession</b>	<a href="#">O15085</a>
<b>Reactivity</b>	Human, Mouse, Rat
<b>Host</b>	Rabbit
<b>Clonality</b>	Polyclonal
<b>Calculated MW</b>	167704

## Additional Information

---

<b>Gene ID</b>	9826
<b>Other Names</b>	ARHGEF11; KIAA0380; Rho guanine nucleotide exchange factor 11; PDZ-RhoGEF
<b>Dilution</b>	WB~~Western Blot: 1/500 - 1/2000. ELISA: 1/5000. Not yet tested in other applications. IHC-P~~N/A
<b>Format</b>	Liquid in PBS containing 50% glycerol, 0.5% BSA and 0.09% (W/V) sodium azide.
<b>Storage Conditions</b>	-20°C

## Protein Information

---

<b>Name</b>	ARHGEF11
<b>Synonyms</b>	KIAA0380
<b>Function</b>	May play a role in the regulation of RhoA GTPase by guanine nucleotide-binding alpha-12 (GNA12) and alpha-13 (GNA13). Acts as guanine nucleotide exchange factor (GEF) for RhoA GTPase and may act as GTPase-activating protein (GAP) for GNA12 and GNA13. Involved in neurotrophin-induced neurite outgrowth.
<b>Cellular Location</b>	Cytoplasm. Membrane. Note=Translocated to the membrane upon stimulation
<b>Tissue Location</b>	Ubiquitously expressed.

## Background

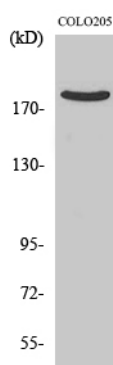
---

May play a role in the regulation of RhoA GTPase by guanine nucleotide-binding alpha-12 (GNA12) and

alpha-13 (GNA13). Acts as guanine nucleotide exchange factor (GEF) for RhoA GTPase and may act as GTPase-activating protein (GAP) for GNA12 and GNA13. Involved in neurotrophin-induced neurite outgrowth.

## Images

---



Western Blot analysis of various cells using PDZ-RhoGEF Polyclonal Antibody

Please note: All products are 'FOR RESEARCH USE ONLY. NOT FOR USE IN DIAGNOSTIC OR THERAPEUTIC PROCEDURES'.