

# Periphilin 1 Polyclonal Antibody

Catalog # AP71848

## Product Information

Application	WB, IHC-P
Primary Accession	<a href="#">Q8NEY8</a>
Reactivity	Human, Mouse
Host	Rabbit
Clonality	Polyclonal
Calculated MW	52737

## Additional Information

Gene ID	51535
Other Names	PPHLN1; HSPC206; HSPC232;Periphilin-1; Gastric cancer antigen Ga50
Dilution	WB~~Western Blot: 1/500 - 1/2000. Immunohistochemistry: 1/100 - 1/300. ELISA: 1/5000. Not yet tested in other applications. IHC-P~~N/A
Format	Liquid in PBS containing 50% glycerol, 0.5% BSA and 0.09% (W/V) sodium azide.
Storage Conditions	-20°C

## Protein Information

Name	PPHLN1 ( <a href="#">HGNC:19369</a> )
Function	Component of the HUSH complex, a multiprotein complex that mediates epigenetic repression. The HUSH complex is recruited to genomic loci rich in H3K9me3 and is probably required to maintain transcriptional silencing by promoting recruitment of SETDB1, a histone methyltransferase that mediates further deposition of H3K9me3. In the HUSH complex, contributes to the maintenance of the complex at chromatin (PubMed: <a href="#">26022416</a> ). Acts as a transcriptional corepressor and regulates the cell cycle, probably via the HUSH complex (PubMed: <a href="#">15474462</a> , PubMed: <a href="#">17963697</a> ). The HUSH complex is also involved in the silencing of unintegrated retroviral DNA: some part of the retroviral DNA formed immediately after infection remains unintegrated in the host genome and is transcriptionally repressed (PubMed: <a href="#">30487602</a> ). May be involved in epithelial differentiation by contributing to epidermal integrity and barrier formation (PubMed: <a href="#">12853457</a> ).
Cellular Location	Nucleus. Cytoplasm. Chromosome. Note=In undifferentiated keratinocytes expressed in speckle-type nuclear granules and at the nuclear membrane, but in the differentiated keratinocytes colocalized with periplakin at the cell periphery and at cell-cell junctions (PubMed:12853457) Localizes to chromatin

(PubMed:26022416).

**Tissue Location**

Ubiquitous..

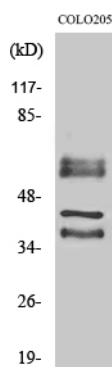
## Background

---

Component of the HUSH complex, a multiprotein complex that mediates epigenetic repression. The HUSH complex is recruited to genomic loci rich in H3K9me3 and is probably required to maintain transcriptional silencing by promoting recruitment of SETDB1, a histone methyltransferase that mediates further deposition of H3K9me3. In the HUSH complex, contributes to the maintenance of the complex at chromatin (PubMed:[26022416](#)). Acts as a transcriptional corepressor and regulates the cell cycle, probably via the HUSH complex (PubMed:[15474462](#), PubMed:[17963697](#)). May be involved in epithelial differentiation by contributing to epidermal integrity and barrier formation (Probable).

## Images

---



Western Blot analysis of various cells using Periphilin 1 Polyclonal Antibody

Please note: All products are 'FOR RESEARCH USE ONLY. NOT FOR USE IN DIAGNOSTIC OR THERAPEUTIC PROCEDURES'.