

Photomedin-1 Polyclonal Antibody

Catalog # AP71888

Product Information

Application	WB, IF
Primary Accession	Q68BL7
Reactivity	Human
Host	Rabbit
Clonality	Polyclonal
Calculated MW	73054

Additional Information

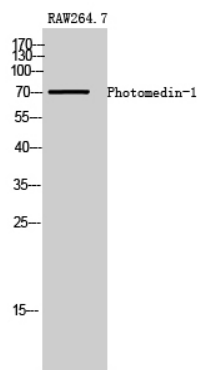
Gene ID	169611
Other Names	OLFML2A; Olfactomedin-like protein 2A; Photomedin-1
Dilution	WB~~Western Blot: 1/500 - 1/2000. Immunofluorescence: 1/200 - 1/1000. ELISA: 1/10000. Not yet tested in other applications. IF~~1:50~200
Format	Liquid in PBS containing 50% glycerol, 0.5% BSA and 0.09% (W/V) sodium azide.
Storage Conditions	-20°C

Protein Information

Name	OLFML2A
Cellular Location	Secreted {ECO:0000250 UniProtKB:Q8BHP7}. Note=Localizes to the podocyte major processes. Colocalized with the major process protein VIM throughout podocyte development
Tissue Location	In the kidney expressed only by podocytes, wherein they localize to major processes.

Images

Western Blot analysis of RAW264.7 cells using
Photomedin-1 Polyclonal Antibody



Please note: All products are 'FOR RESEARCH USE ONLY. NOT FOR USE IN DIAGNOSTIC OR THERAPEUTIC PROCEDURES'.