

# PIAS 3 Polyclonal Antibody

Catalog # AP71901

## Product Information

Application	WB, IHC-P
Primary Accession	<a href="#">Q9Y6X2</a>
Reactivity	Human, Mouse, Rat
Host	Rabbit
Clonality	Polyclonal
Calculated MW	68017

## Additional Information

Gene ID	10401
Other Names	PIAS3; E3 SUMO-protein ligase PIAS3; Protein inhibitor of activated STAT protein 3
Dilution	WB~~Western Blot: 1/500 - 1/2000. Immunohistochemistry: 1/100 - 1/300. ELISA: 1/10000. Not yet tested in other applications. IHC-P~~N/A
Format	Liquid in PBS containing 50% glycerol, 0.5% BSA and 0.09% (W/V) sodium azide.
Storage Conditions	-20°C

## Protein Information

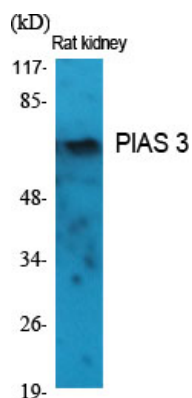
Name	PIAS3
Function	Functions as an E3-type small ubiquitin-like modifier (SUMO) ligase, stabilizing the interaction between UBE2I and the substrate, and as a SUMO-tethering factor. Plays a crucial role as a transcriptional coregulation in various cellular pathways, including the STAT pathway and the steroid hormone signaling pathway. Involved in regulating STAT3 signaling via inhibiting STAT3 DNA-binding and suppressing cell growth. Enhances the sumoylation of MTA1 and may participate in its paralog-selective sumoylation (PubMed: <a href="#">21965678</a> , PubMed: <a href="#">9388184</a> ). Sumoylates CCAR2 which promotes its interaction with SIRT1 (PubMed: <a href="#">25406032</a> ). Diminishes the sumoylation of ZFX3 by preventing the colocalization of ZFX3 with SUMO1 in the nucleus (PubMed: <a href="#">24651376</a> ).
Cellular Location	Cytoplasm {ECO:0000250 UniProtKB:O54714}. Nucleus {ECO:0000250 UniProtKB:O54714}. Nucleus speckle {ECO:0000250 UniProtKB:O54714}. Note=Colocalizes with MITF in the nucleus. Colocalizes with GFI1 in nuclear dots. Colocalizes with SUMO1 in nuclear granules. {ECO:0000250 UniProtKB:O54714}

**Tissue Location**

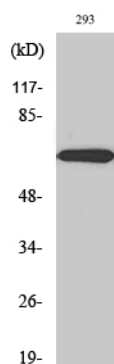
Widely expressed..

**Background**

Functions as an E3-type small ubiquitin-like modifier (SUMO) ligase, stabilizing the interaction between UBE2I and the substrate, and as a SUMO-tethering factor. Plays a crucial role as a transcriptional coregulation in various cellular pathways, including the STAT pathway and the steroid hormone signaling pathway. Involved in regulating STAT3 signaling via inhibiting STAT3 DNA-binding and suppressing cell growth. Enhances the sumoylation of MTA1 and may participate in its paralog-selective sumoylation (PubMed:[21965678](#), PubMed:[9388184](#)). Sumoylates CCAR2 which promotes its interaction with SIRT1 (PubMed:[25406032](#)). Diminishes the sumoylation of ZFH3 by preventing the colocalization of ZFH3 with SUMO1 in the nucleus (PubMed:[24651376](#)).

**Images**

Western Blot analysis of various cells using PIAS 3 Polyclonal Antibody diluted at 1 : 2000 cells nucleus extracted by Minute TM Cytoplasmic and Nuclear Fractionation kit (SC-003, Invent biotech, MN, USA).



Western Blot analysis of 293 cells using PIAS 3 Polyclonal Antibody diluted at 1 : 2000 cells nucleus extracted by Minute TM Cytoplasmic and Nuclear Fractionation kit (SC-003, Invent biotech, MN, USA).

Please note: All products are 'FOR RESEARCH USE ONLY. NOT FOR USE IN DIAGNOSTIC OR THERAPEUTIC PROCEDURES'.