

PITSLRE Polyclonal Antibody

Catalog # AP71922

Product Information

Application	WB, IHC-P
Primary Accession	P21127
Reactivity	Human, Mouse
Host	Rabbit
Clonality	Polyclonal
Calculated MW	92620

Additional Information

Gene ID	984
Other Names	CDK11B; CDC2L1; CDK11; PITSLREA; PK58; Cyclin-dependent kinase 11B; Cell division cycle 2-like protein kinase 1; CLK-1; Cell division protein kinase 11B; Galactosyltransferase-associated protein kinase p58/GTA; PITSLRE serine/threonine-prot
Dilution	WB~~Western Blot: 1/500 - 1/2000. Immunohistochemistry: 1/100 - 1/300. ELISA: 1/20000. Not yet tested in other applications. IHC-P~~N/A
Format	Liquid in PBS containing 50% glycerol, 0.5% BSA and 0.09% (W/V) sodium azide.
Storage Conditions	-20°C

Protein Information

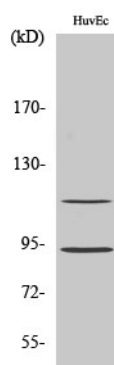
Name	CDK11B
Synonyms	CDC2L1, CDK11, PITSLREA, PK58
Function	Plays multiple roles in cell cycle progression, cytokinesis and apoptosis. Involved in pre-mRNA splicing in a kinase activity- dependent manner. Isoform 7 may act as a negative regulator of normal cell cycle progression.
Cellular Location	Cytoplasm. Nucleus.
Tissue Location	Expressed ubiquitously. Some evidence of isoform- specific tissue distribution.

Background

Plays multiple roles in cell cycle progression, cytokinesis and apoptosis. Involved in pre-mRNA splicing in a

kinase activity-dependent manner. Isoform 7 may act as a negative regulator of normal cell cycle progression.

Images



Western Blot analysis of various cells using PITSLRE Polyclonal Antibody

Please note: All products are 'FOR RESEARCH USE ONLY. NOT FOR USE IN DIAGNOSTIC OR THERAPEUTIC PROCEDURES'.