

# Pitx1 Polyclonal Antibody

Catalog # AP71923

## Product Information

---

<b>Application</b>	WB, IHC-P, IF, ICC, E
<b>Primary Accession</b>	<a href="#">P78337</a>
<b>Reactivity</b>	Human, Mouse, Rat
<b>Host</b>	Rabbit
<b>Clonality</b>	Polyclonal
<b>Calculated MW</b>	34128

## Additional Information

---

<b>Gene ID</b>	5307
<b>Other Names</b>	PITX1; BFT; PTX1; Pituitary homeobox 1; Hindlimb-expressed homeobox protein backfoot; Homeobox protein PITX1; Paired-like homeodomain transcription factor 1
<b>Dilution</b>	WB~~Western Blot: 1/500 - 1/2000. Immunohistochemistry: 1/100 - 1/300. ELISA: 1/20000. Not yet tested in other applications. IHC-P~~N/A IF~~1:50~200 ICC~~N/A E~~N/A
<b>Format</b>	Liquid in PBS containing 50% glycerol, 0.5% BSA and 0.09% (W/V) sodium azide.
<b>Storage Conditions</b>	-20°C

## Protein Information

---

<b>Name</b>	PITX1
<b>Synonyms</b>	BFT, PTX1
<b>Function</b>	Sequence-specific transcription factor that binds gene promoters and activates their transcription. May play a role in the development of anterior structures, and in particular, the brain and facies and in specifying the identity or structure of hindlimb.
<b>Cellular Location</b>	Nucleus.

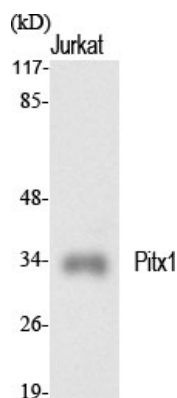
## Background

---

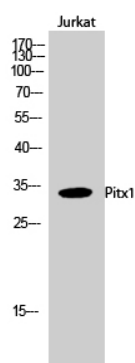
Sequence-specific transcription factor that binds gene promoters and activates their transcription. May play a role in the development of anterior structures, and in particular, the brain and facies and in specifying the identity or structure of hindlimb.

## Images

---



Western Blot analysis of various cells using Pitx1 Polyclonal Antibody cells nucleus extracted by Minute TM Cytoplasmic and Nuclear Fractionation kit (SC-003, Inventbiotech, MN, USA).



Western Blot analysis of Jurkat cells using Pitx1 Polyclonal Antibody cells nucleus extracted by Minute TM Cytoplasmic and Nuclear Fractionation kit (SC-003, Inventbiotech, MN, USA).

Please note: All products are 'FOR RESEARCH USE ONLY. NOT FOR USE IN DIAGNOSTIC OR THERAPEUTIC PROCEDURES'.