

PKA II β reg Polyclonal Antibody

Catalog # AP71928

Product Information

Application	WB, IHC-P, IF, ICC, E
Primary Accession	P31323
Reactivity	Human, Mouse, Rat
Host	Rabbit
Clonality	Polyclonal
Calculated MW	46302

Additional Information

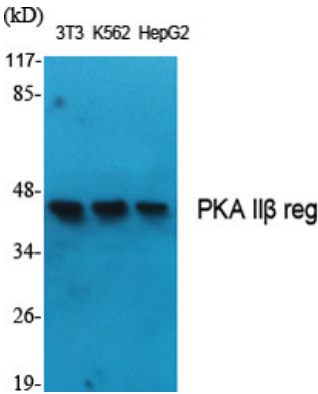
Gene ID	5577
Other Names	PRKAR2B; cAMP-dependent protein kinase type II-beta regulatory subunit
Dilution	WB~~Western Blot: 1/500 - 1/2000. Immunohistochemistry: 1/100 - 1/300. ELISA: 1/10000. Not yet tested in other applications. IHC-P~~N/A IF~~1:50~200 ICC~~N/A E~~N/A
Format	Liquid in PBS containing 50% glycerol, 0.5% BSA and 0.09% (W/V) sodium azide.
Storage Conditions	-20°C

Protein Information

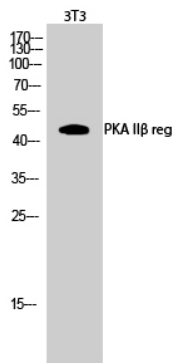
Name	PRKAR2B
Function	Regulatory subunit of the cAMP-dependent protein kinases involved in cAMP signaling in cells. Type II regulatory chains mediate membrane association by binding to anchoring proteins, including the MAP2 kinase.
Cellular Location	Cytoplasm. Cell membrane. Note=Colocalizes with PJA2 in the cytoplasm and at the cell membrane
Tissue Location	Four types of regulatory chains are found: I-alpha, I-beta, II-alpha, and II-beta. Their expression varies among tissues and is in some cases constitutive and in others inducible

Background

Regulatory subunit of the cAMP-dependent protein kinases involved in cAMP signaling in cells. Type II regulatory chains mediate membrane association by binding to anchoring proteins, including the MAP2 kinase.



Western Blot analysis of various cells using PKA IIβ reg Polyclonal Antibody



Western Blot analysis of 3T3 cells using PKA IIβ reg Polyclonal Antibody

Please note: All products are 'FOR RESEARCH USE ONLY. NOT FOR USE IN DIAGNOSTIC OR THERAPEUTIC PROCEDURES'.