

URKL1 Antibody (N-term)

Purified Rabbit Polyclonal Antibody (Pab)

Catalog # AP7193a

Product Information

Application	WB, IHC-P, E
Primary Accession	Q9NWZ5
Other Accession	Q91YL3
Reactivity	Human
Predicted	Mouse
Host	Rabbit
Clonality	Polyclonal
Isotype	Rabbit IgG
Clone Names	RB5635
Calculated MW	61141
Antigen Region	60-90

Additional Information

Gene ID	54963
Other Names	Uridine-cytidine kinase-like 1, UCKL1, URKL1
Target/Specificity	This URKL1 antibody is generated from rabbits immunized with a KLH conjugated synthetic peptide between 60-90 amino acids from the N-terminal region of human URKL1.
Dilution	WB~~1:1000 IHC-P~~1:100~500 E~~Use at an assay dependent concentration.
Format	Purified polyclonal antibody supplied in PBS with 0.09% (W/V) sodium azide. This antibody is prepared by Saturated Ammonium Sulfate (SAS) precipitation followed by dialysis against PBS.
Storage	Maintain refrigerated at 2-8°C for up to 2 weeks. For long term storage store at -20°C in small aliquots to prevent freeze-thaw cycles.
Precautions	URKL1 Antibody (N-term) is for research use only and not for use in diagnostic or therapeutic procedures.

Protein Information

Name	UCKL1
Synonyms	URKL1
Function	May contribute to UTP accumulation needed for blast transformation and

proliferation.

Cellular Location

Cytoplasm. Nucleus. Note=EBNA3 induces isoform 1 translocation to the nucleus, whereas it does change isoform 3 location

Tissue Location

Ubiquitous..

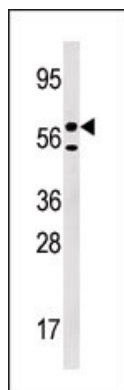
Background

Uridine kinase is a key enzyme in the pyrimidine salvage pathway of all mammalian cells. URKL1 (uridine kinase-like 1) is highly similar in structure and sequence to uridine kinase.

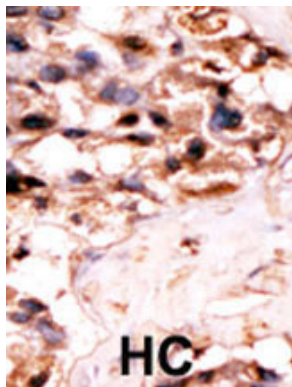
References

Kashuba, E., et al., (er) BMC Cell Biol. 3 (1), 23 (2002) (): ().

Images



Western blot analysis of anti-URKL1 Pab(Cat. #AP7193a) in 293 cell line lysate (35ug/lane). URKL1(arrow) was detected using the purified Pab.



Formalin-fixed and paraffin-embedded human cancer tissue reacted with the primary antibody, which was peroxidase-conjugated to the secondary antibody, followed by DAB staining. This data demonstrates the use of this antibody for immunohistochemistry; clinical relevance has not been evaluated. BC = breast carcinoma; HC = hepatocarcinoma.

Please note: All products are 'FOR RESEARCH USE ONLY. NOT FOR USE IN DIAGNOSTIC OR THERAPEUTIC PROCEDURES'.