

# PLC $\beta$ 3 Polyclonal Antibody

Catalog # AP71972

## Product Information

Application	WB, IHC-P
Primary Accession	<a href="#">Q01970</a>
Reactivity	Human, Mouse, Rat
Host	Rabbit
Clonality	Polyclonal
Calculated MW	138799

## Additional Information

Gene ID	5331
Other Names	PLCB3; 1-phosphatidylinositol 4; 5-bisphosphate phosphodiesterase beta-3; Phosphoinositide phospholipase C-beta-3; Phospholipase C-beta-3; PLC-beta-3
Dilution	WB~~Western Blot: 1/500 - 1/2000. Immunohistochemistry: 1/100 - 1/300. ELISA: 1/40000. Not yet tested in other applications. IHC-P~~Western Blot: 1/500 - 1/2000. Immunohistochemistry: 1/100 - 1/300. ELISA: 1/40000. Not yet tested in other applications.
Format	Liquid in PBS containing 50% glycerol, 0.5% BSA and 0.09% (W/V) sodium azide.
Storage Conditions	-20°C

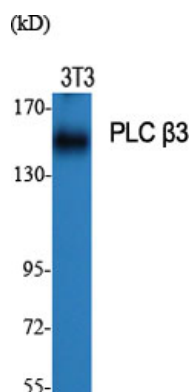
## Protein Information

Name	PLCB3 {ECO:0000303   PubMed:20966218, ECO:0000312   EMBL:AAA77683.1}
Function	Catalyzes the production of the second messenger molecules diacylglycerol (DAG) and inositol 1,4,5-trisphosphate (IP3) (PubMed: <a href="#">20966218</a> , PubMed: <a href="#">29122926</a> , PubMed: <a href="#">37991948</a> , PubMed: <a href="#">9188725</a> ). Key transducer of G protein-coupled receptor signaling: activated by G(q)/G(11) G alpha proteins downstream of G protein-coupled receptors activation (PubMed: <a href="#">20966218</a> , PubMed: <a href="#">37991948</a> ). In neutrophils, participates in a phospholipase C-activating N-formyl peptide-activated GPCR (G protein-coupled receptor) signaling pathway by promoting RASGRP4 activation by DAG, to promote neutrophil functional responses (By similarity).
Cellular Location	Cytoplasm. Membrane {ECO:0000250   UniProtKB:Q99JE6}. Nucleus {ECO:0000250   UniProtKB:P51432} Note=And particulate fractions. {ECO:0000250   UniProtKB:Q99JE6}

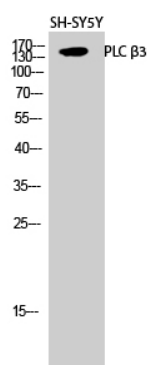
## Background

The production of the second messenger molecules diacylglycerol (DAG) and inositol 1,4,5-trisphosphate (IP3) is mediated by activated phosphatidylinositol-specific phospholipase C enzymes.

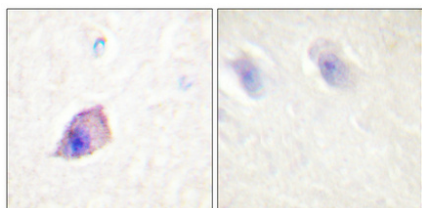
## Images



Western Blot analysis of various cells using PLC β3  
Polyclonal Antibody diluted at 1 : 1000



Western Blot analysis of SH-SY5Y cells using PLC β3  
Polyclonal Antibody diluted at 1 : 1000



Immunohistochemical analysis of paraffin-embedded  
Human brain. Antibody was diluted at  
1:100(4°,overnight). High-pressure and temperature  
Tris-EDTA,pH8.0 was used for antigen retrieval. Negative  
control (right) obtained from antibody was pre-absorbed by  
immunogen peptide.

Please note: All products are 'FOR RESEARCH USE ONLY. NOT FOR USE IN DIAGNOSTIC OR THERAPEUTIC PROCEDURES'.