

POTE-14/22 Polyclonal Antibody

Catalog # AP72005

Product Information

Application	WB, IHC-P
Primary Accession	Q6S545 , Q6S5H5
Reactivity	Human
Host	Rabbit
Clonality	Polyclonal
Calculated MW	60965

Additional Information

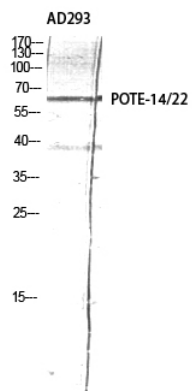
Gene ID	23784
Other Names	POTEH; A26C3; ACTBL1; POTE22; POTE ankyrin domain family member H; ANKRD26-like family C member 3; Prostate; ovary, testis-expressed protein on chromosome 22; POTE-22; POTEg; A26C2; POTE14; POTE ankyrin domain family member G; ANKRD26-like
Dilution	WB~~Western Blot: 1/500 - 1/2000. Immunohistochemistry: 1/100 - 1/300. ELISA: 1/40000. Not yet tested in other applications. IHC-P~~N/A
Format	Liquid in PBS containing 50% glycerol, 0.5% BSA and 0.09% (W/V) sodium azide.
Storage Conditions	-20°C

Protein Information

Name	POTEH
Synonyms	A26C3, ACTBL1, POTE22

Images

Western Blot analysis of AD293 using POTE-14/22
Polyclonal Antibody diluted at 1 : 2000



Please note: All products are 'FOR RESEARCH USE ONLY. NOT FOR USE IN DIAGNOSTIC OR THERAPEUTIC PROCEDURES'.