

RIOK1 Antibody (N-term)

Purified Rabbit Polyclonal Antibody (Pab)

Catalog # AP7200a

Product Information

Application	IHC-P, WB, E
Primary Accession	Q9BRS2
Reactivity	Human
Host	Rabbit
Clonality	Polyclonal
Isotype	Rabbit IgG
Clone Names	RB9799
Calculated MW	65583
Antigen Region	126-156

Additional Information

Gene ID	83732
Other Names	Serine/threonine-protein kinase RIO1, RIO kinase 1, RIOK1
Target/Specificity	This RIOK1 antibody is generated from rabbits immunized with a KLH conjugated synthetic peptide between 126-156 amino acids from the N-terminal region of human RIOK1.
Dilution	IHC-P~~1:100~500 WB~~1:1000 E~~Use at an assay dependent concentration.
Format	Purified polyclonal antibody supplied in PBS with 0.09% (W/V) sodium azide. This antibody is prepared by Saturated Ammonium Sulfate (SAS) precipitation followed by dialysis against PBS.
Storage	Maintain refrigerated at 2-8°C for up to 2 weeks. For long term storage store at -20°C in small aliquots to prevent freeze-thaw cycles.
Precautions	RIOK1 Antibody (N-term) is for research use only and not for use in diagnostic or therapeutic procedures.

Protein Information

Name	RIOK1 (HGNC:18656)
Synonyms	RIO1
Function	Involved in the final steps of cytoplasmic maturation of the 40S ribosomal subunit. Involved in processing of 18S-E pre-rRNA to the mature 18S rRNA. Required for the recycling of NOB1 and PNO1 from the late 40S precursor

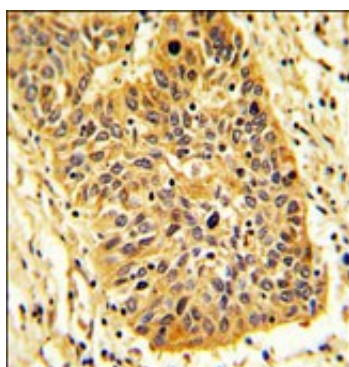
(PubMed:[22072790](#)). The association with the very late 40S subunit intermediate may involve a translation-like checkpoint point cycle preceding the binding to the 60S ribosomal subunit (By similarity). Despite the protein kinase domain is proposed to act predominantly as an ATPase (By similarity). The catalytic activity regulates its dynamic association with the 40S subunit (By similarity). In addition to its role in ribosomal biogenesis acts as an adapter protein by recruiting NCL/nucleolin the to PRMT5 complex for its symmetrical methylation (PubMed:[21081503](#)).

Cellular Location Cytoplasm, cytosol.

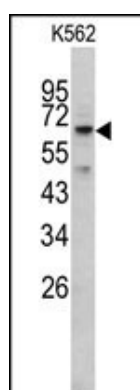
References

Ota, T., et al., Nat. Genet. 36(1):40-45 (2004).

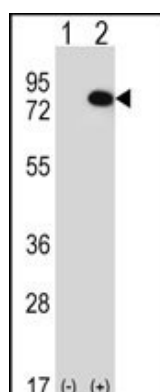
Images



Formalin-fixed and paraffin-embedded human lung carcinoma reacted with R1OK1 Antibody (N-term), which was peroxidase-conjugated to the secondary antibody, followed by DAB staining. This data demonstrates the use of this antibody for immunohistochemistry; clinical relevance has not been evaluated.



Western blot analysis of R1OK1 antibody (N-term) (Cat. #AP7200a) in K562 cell line lysates (35ug/lane). R1OK1 (arrow) was detected using the purified Pab.



Western blot analysis of R1OK1 (arrow) using rabbit polyclonal R1OK1 Antibody (N-term) (Cat. #AP7200a). 293 cell lysates (2 ug/lane) either nontransfected (Lane 1) or transiently transfected (Lane 2) with the R1OK1 gene.