

# PPP1R14D Polyclonal Antibody

Catalog # AP72020

## Product Information

---

<b>Application</b>	WB, IHC-P
<b>Primary Accession</b>	<a href="#">Q9NXH3</a>
<b>Reactivity</b>	Human
<b>Host</b>	Rabbit
<b>Clonality</b>	Polyclonal
<b>Calculated MW</b>	16508

## Additional Information

---

<b>Gene ID</b>	54866
<b>Other Names</b>	PPP1R14D; GBPI; Protein phosphatase 1 regulatory subunit 14D; Gastrointestinal and brain-specific PP1-inhibitory protein 1; GBPI-1
<b>Dilution</b>	WB--Western Blot: 1/500 - 1/2000. Immunohistochemistry: 1/100 - 1/300. ELISA: 1/5000. Not yet tested in other applications. IHC-P--N/A
<b>Format</b>	Liquid in PBS containing 50% glycerol, 0.5% BSA and 0.09% (W/V) sodium azide.
<b>Storage Conditions</b>	-20°C

## Protein Information

---

<b>Name</b>	PPP1R14D
<b>Synonyms</b>	GBPI
<b>Function</b>	Inhibitor of PPP1CA. Has inhibitory activity only when phosphorylated, creating a molecular switch for regulating the phosphorylation status of PPP1CA substrates and smooth muscle contraction.
<b>Cellular Location</b>	Cytoplasm.
<b>Tissue Location</b>	Detected in colon, intestine, kidney and brain cortex.

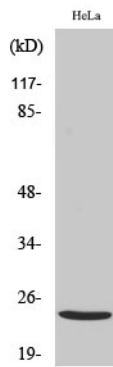
## Background

---

Inhibitor of PPP1CA. Has inhibitory activity only when phosphorylated, creating a molecular switch for regulating the phosphorylation status of PPP1CA substrates and smooth muscle contraction.

## Images

---



Western Blot analysis of various cells using PPP1R14D Polyclonal Antibody

Please note: All products are 'FOR RESEARCH USE ONLY. NOT FOR USE IN DIAGNOSTIC OR THERAPEUTIC PROCEDURES'.