

# PRSS33 Polyclonal Antibody

Catalog # AP72054

## Product Information

---

<b>Application</b>	WB, IHC-P, IF, ICC, E
<b>Primary Accession</b>	<a href="#">Q8NF86</a>
<b>Reactivity</b>	Human, Rat, Mouse
<b>Host</b>	Rabbit
<b>Clonality</b>	Polyclonal
<b>Calculated MW</b>	29787

## Additional Information

---

<b>Gene ID</b>	260429
<b>Other Names</b>	PRSS33; Serine protease 33; Serine protease EOS
<b>Dilution</b>	WB~~Western Blot: 1/500 - 1/2000. Immunohistochemistry: 1/100 - 1/300. ELISA: 1/10000. Not yet tested in other applications. IHC-P~~N/A IF~~1:50~200 ICC~~N/A E~~N/A
<b>Format</b>	Liquid in PBS containing 50% glycerol, 0.5% BSA and 0.09% (W/V) sodium azide.
<b>Storage Conditions</b>	-20°C

## Protein Information

---

<b>Name</b>	PRSS33
<b>Function</b>	Serine protease that has amidolytic activity, cleaving its substrates before Arg residues.
<b>Cellular Location</b>	Secreted.
<b>Tissue Location</b>	Predominantly expressed in macrophages. Present in the spleen, small and large intestine, lung and brain (at protein level). Highly expressed in peripheral leukocytes, ovary, retina, spleen and stomach. Moderately expressed in thymus, uterus and platelets, as well as some brain tissues, such as thalamus and fetal brain.

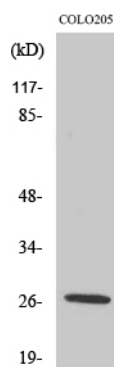
## Background

---

Serine protease that has amidolytic activity, cleaving its substrates before Arg residues.

## Images

---



Western Blot analysis of various cells using PRSS33 Polyclonal Antibody

Please note: All products are 'FOR RESEARCH USE ONLY. NOT FOR USE IN DIAGNOSTIC OR THERAPEUTIC PROCEDURES'.