

Ptx3 Polyclonal Antibody

Catalog # AP72088

Product Information

Application	WB, IHC-P, IF
Primary Accession	P26022
Reactivity	Human, Mouse
Host	Rabbit
Clonality	Polyclonal
Calculated MW	41976

Additional Information

Gene ID	5806
Other Names	PTX3; TNFAIP5; TSG14; Pentraxin-related protein PTX3; Pentaxin-related protein PTX3; Tumor necrosis factor alpha-induced protein 5; TNF alpha-induced protein 5; Tumor necrosis factor-inducible gene 14 protein; TSG-14
Dilution	WB~~Western Blot: 1/500 - 1/2000. Immunohistochemistry: 1/100 - 1/300. Immunofluorescence: 1/200 - 1/1000. ELISA: 1/10000. Not yet tested in other applications. IHC-P~~Western Blot: 1/500 - 1/2000. Immunohistochemistry: 1/100 - 1/300. Immunofluorescence: 1/200 - 1/1000. ELISA: 1/10000. Not yet tested in other applications. IF~~1:50~200
Format	Liquid in PBS containing 50% glycerol, 0.5% BSA and 0.09% (W/V) sodium azide.
Storage Conditions	-20°C

Protein Information

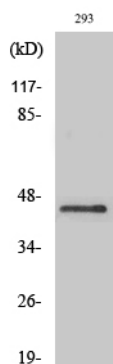
Name	PTX3 (HGNC:9692)
Synonyms	TNFAIP5, TSG14
Function	Plays a role in the regulation of innate resistance to pathogens, inflammatory reactions, possibly clearance of self- components and female fertility.
Cellular Location	Secreted.

Background

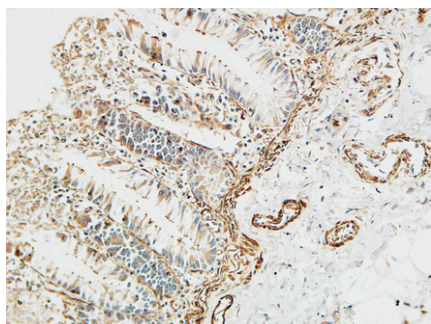
Plays a role in the regulation of innate resistance to pathogens, inflammatory reactions, possibly clearance

of self- components and female fertility.

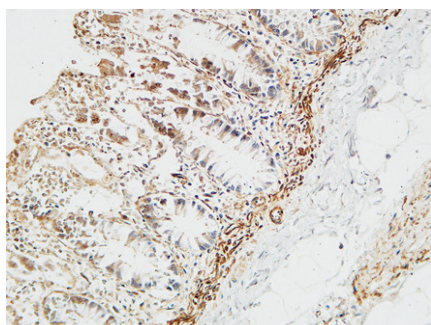
Images



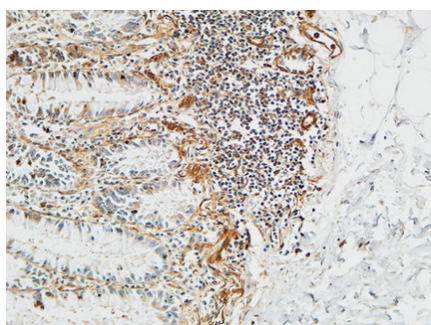
Western Blot analysis of various cells using Ptx3 Polyclonal Antibody diluted at 1 : 1000



Immunohistochemical analysis of paraffin-embedded Human colon. 1, Antibody was diluted at 1:100(4°,overnight). 2, High-pressure and temperature EDTA, pH8.0 was used for antigen retrieval. 3,Secondary antibody was diluted at 1:200(room temperature, 30min).



Immunohistochemical analysis of paraffin-embedded Human colon. 1, Antibody was diluted at 1:100(4°,overnight). 2, High-pressure and temperature EDTA, pH8.0 was used for antigen retrieval. 3,Secondary antibody was diluted at 1:200(room temperature, 30min).



Immunohistochemical analysis of paraffin-embedded Human colon. 1, Antibody was diluted at 1:100(4°,overnight). 2, High-pressure and temperature EDTA, pH8.0 was used for antigen retrieval. 3,Secondary antibody was diluted at 1:200(room temperature, 30min).

Please note: All products are 'FOR RESEARCH USE ONLY. NOT FOR USE IN DIAGNOSTIC OR THERAPEUTIC PROCEDURES'.