

Rab 2A Polyclonal Antibody

Catalog # AP72107

Product Information

Application	WB, IHC-P, IF, ICC, E
Primary Accession	P61019
Reactivity	Human, Mouse, Rat
Host	Rabbit
Clonality	Polyclonal
Calculated MW	23546

Additional Information

Gene ID	5862
Other Names	RAB2A; RAB2; Ras-related protein Rab-2A
Dilution	WB~~Western Blot: 1/500 - 1/2000. Immunohistochemistry: 1/100 - 1/300. ELISA: 1/20000. Not yet tested in other applications. IHC-P~~N/A IF~~1:50~200 ICC~~N/A E~~N/A
Format	Liquid in PBS containing 50% glycerol, 0.5% BSA and 0.09% (W/V) sodium azide.
Storage Conditions	-20°C

Protein Information

Name	RAB2A (HGNC:9763)
Synonyms	RAB2
Function	<p>The small GTPases Rab are key regulators of intracellular membrane trafficking, from the formation of transport vesicles to their fusion with membranes. Rabs cycle between active GTP-bound and inactive GDP-bound states. In their active state, drive transport of vesicular carriers from donor organelles to acceptor organelles to regulate the membrane traffic that maintains organelle identity and morphology (PubMed:37821429). RAB2A regulates autophagy by promoting autophagosome-lysosome fusion via recruitment of the HOPS endosomal tethering complex; this process involves autophagosomal RAB2A and lysosomal RAB39A recruitment of HOPS subcomplexes VPS39-VPS11 and VPS41-VPS16-VPS18-VPS33A, respectively, which assemble into a functional complex to mediate membrane tethering and SNAREs-driven membrane fusion (PubMed:37821429). Required for protein transport from the endoplasmic reticulum to the Golgi complex. Regulates the compacted morphology of the Golgi (PubMed:26209634). Together with RAB2B, redundantly required for efficient autophagic flux</p>

(PubMed:[28483915](#)).

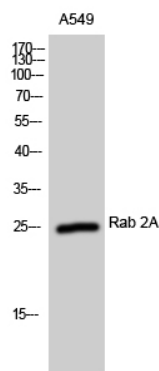
Cellular Location

Endoplasmic reticulum-Golgi intermediate compartment membrane; Lipid-anchor; Cytoplasmic side Melanosome. Endoplasmic reticulum membrane; Lipid-anchor; Cytoplasmic side. Golgi apparatus membrane; Lipid-anchor; Cytoplasmic side. Cytoplasmic vesicle, secretory vesicle, acrosome {ECO:0000250|UniProtKB:P53994}. Cytoplasmic vesicle, autophagosome membrane {ECO:0000250|UniProtKB:P53994}; Lipid-anchor; Cytoplasmic side Note=Localized in the Golgi apparatus in the round spermatids and in the acrosome in the elongating spermatid (By similarity). Identified by mass spectrometry in melanosome fractions from stage I to stage IV (PubMed:17081065). {ECO:0000250|UniProtKB:P53994, ECO:0000269|PubMed:17081065}

Background

Required for protein transport from the endoplasmic reticulum to the Golgi complex.

Images



Western Blot analysis of A549 cells using Rab 2A Polyclonal Antibody

Please note: All products are 'FOR RESEARCH USE ONLY. NOT FOR USE IN DIAGNOSTIC OR THERAPEUTIC PROCEDURES'.