

# Rabaptin-5 $\beta$ Polyclonal Antibody

Catalog # AP72131

## Product Information

---

Application	WB, IHC-P
Primary Accession	<a href="#">Q9H5N1</a>
Reactivity	Human, Mouse, Rat
Host	Rabbit
Clonality	Polyclonal
Calculated MW	63543

## Additional Information

---

Gene ID	79874
Other Names	RABEP2; RABPT5B; Rab GTPase-binding effector protein 2; Rabaptin-5beta
Dilution	WB~~Western Blot: 1/500 - 1/2000. Immunohistochemistry: 1/100 - 1/300. ELISA: 1/10000. Not yet tested in other applications. IHC-P~~N/A
Format	Liquid in PBS containing 50% glycerol, 0.5% BSA and 0.09% (W/V) sodium azide.
Storage Conditions	-20°C

## Protein Information

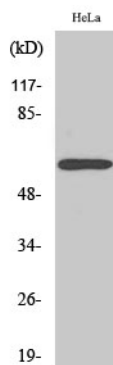
---

Name	RABEP2
Synonyms	RABPT5B
Function	Plays a role in membrane trafficking and in homotypic early endosome fusion (PubMed: <a href="#">9524116</a> ). Participates in arteriogenesis by regulating vascular endothelial growth factor receptor 2/VEGFR2 cell surface expression and endosomal trafficking (PubMed: <a href="#">29425100</a> ). By interacting with SDCCAG8, localizes to centrosomes and plays a critical role in ciliogenesis (PubMed: <a href="#">27224062</a> ).
Cellular Location	Cytoplasm. Early endosome. Cytoplasm, cytoskeleton, microtubule organizing center, centrosome. Cytoplasm, cytoskeleton, cilium basal body

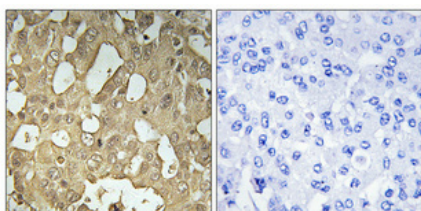
## Background

---

Plays a role in membrane trafficking and in homotypic early endosome fusion.



Western Blot analysis of various cells using Rabaptin-5β Polyclonal Antibody



Immunohistochemical analysis of paraffin-embedded Human breast cancer. Antibody was diluted at 1:100(4°,overnight). High-pressure and temperature Tris-EDTA,pH8.0 was used for antigen retrieval. Negative contrl (right) obtaned from antibody was pre-absorbed by immunogen peptide.

Please note: All products are 'FOR RESEARCH USE ONLY. NOT FOR USE IN DIAGNOSTIC OR THERAPEUTIC PROCEDURES'.