

# SCYL1 Antibody (N-term)

Affinity Purified Rabbit Polyclonal Antibody (Pab)

Catalog # AP7215a

## Product Information

---

<b>Application</b>	WB, IHC-P, E
<b>Primary Accession</b>	<a href="#">Q96KG9</a>
<b>Other Accession</b>	<a href="#">A6QLH6</a>
<b>Reactivity</b>	Human
<b>Predicted</b>	Bovine
<b>Host</b>	Rabbit
<b>Clonality</b>	Polyclonal
<b>Isotype</b>	Rabbit IgG
<b>Clone Names</b>	RB9791
<b>Calculated MW</b>	89631
<b>Antigen Region</b>	156-185

## Additional Information

---

<b>Gene ID</b>	57410
<b>Other Names</b>	N-terminal kinase-like protein, Coated vesicle-associated kinase of 90 kDa, SCY1-like protein 1, Telomerase regulation-associated protein, Telomerase transcriptional element-interacting factor, Teratoma-associated tyrosine kinase, SCYL1, CVAK90, GKLP, NTKL, TAPK, TEIF, TRAP
<b>Target/Specificity</b>	This SCYL1 antibody is generated from rabbits immunized with a KLH conjugated synthetic peptide between 156-185 amino acids from the N-terminal region of human SCYL1.
<b>Dilution</b>	WB~~1:1000 IHC-P~~1:100~500 E~~Use at an assay dependent concentration.
<b>Format</b>	Purified polyclonal antibody supplied in PBS with 0.09% (W/V) sodium azide. This antibody is purified through a protein A column, followed by peptide affinity purification.
<b>Storage</b>	Maintain refrigerated at 2-8°C for up to 2 weeks. For long term storage store at -20°C in small aliquots to prevent freeze-thaw cycles.
<b>Precautions</b>	SCYL1 Antibody (N-term) is for research use only and not for use in diagnostic or therapeutic procedures.

## Protein Information

---

<b>Name</b>	SCYL1
-------------	-------

<b>Synonyms</b>	CVAK90, GKLP, NTKL, TAPK, TEIF, TRAP
<b>Function</b>	Regulates COPI-mediated retrograde protein traffic at the interface between the Golgi apparatus and the endoplasmic reticulum (PubMed: <a href="#">18556652</a> ). Involved in the maintenance of the Golgi apparatus morphology (PubMed: <a href="#">26581903</a> ).
<b>Cellular Location</b>	Cytoplasm, cytoskeleton, microtubule organizing center, centrosome. Endoplasmic reticulum-Golgi intermediate compartment Golgi apparatus, cis-Golgi network Note=Localized to the Endoplasmic reticulum-Golgi intermediate and cis- Golgi in an ARF1-independent manner [Isoform 2]: Cytoplasm. Note=Cytoplasmic throughout the cell cycle [Isoform 6]: Nucleus
<b>Tissue Location</b>	Ubiquitous..

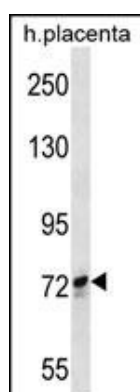
## Background

SCYL1 forms multimers following transfection into COS-7 cells. SCYL1 forms a 300-kD trimer using crosslinking reagents. Biochemical analysis revealed no phosphorylation or autophosphorylation activity. The 707-amino acid SCYL1 variant, variant 2, localized to centrosomes during mitosis. During interphase, fluorescence-tagged variant 2 localized in the cytoplasm as well as centrosomes. However, at the beginning of mitosis, the fluorescence appeared as a pair of bright nuclear foci that followed centrosome localization throughout mitosis, while maintaining diffuse cytoplasmic labeling. Endogenous variant 2 in HeLa cells showed a similar staining pattern. Centrosomal localization was independent of microtubules.

## References

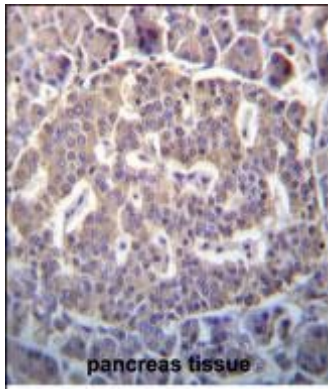
Tang, Z., et al., Biochem. Biophys. Res. Commun. 324(4):1324-1332 (2004).  
Kato, M., et al., Genomics 79(6):760-767 (2002).  
Liu, S.C., et al., Biochim. Biophys. Acta 1517(1):148-152 (2000).  
van Asseldonk, M., et al., Genomics 66(1):35-42 (2000).

## Images



SCYL1 Antibody (N-term) (Cat. #AP7215a) western blot analysis in human placenta tissue lysates (35ug/lane). This demonstrates the SCYL1 antibody detected the SCYL1 protein (arrow).

SCYL1 Antibody (N-term) (Cat. #AP7215a) immunohistochemistry analysis in formalin fixed and paraffin embedded human pancreas tissue followed by peroxidase conjugation of the secondary antibody and DAB staining. This data demonstrates the use of SCYL1 Antibody (N-term) for immunohistochemistry. Clinical relevance has not been evaluated.



Please note: All products are 'FOR RESEARCH USE ONLY. NOT FOR USE IN DIAGNOSTIC OR THERAPEUTIC PROCEDURES'.