

Raftlin Polyclonal Antibody

Catalog # AP72172

Product Information

Application	WB
Primary Accession	Q14699
Reactivity	Human
Host	Rabbit
Clonality	Polyclonal
Calculated MW	63146

Additional Information

Gene ID	23180
Other Names	RFTN1; KIAA0084; MIG2; Raftlin; Cell migration-inducing gene 2 protein; Raft-linking protein
Dilution	WB~~Western Blot: 1/500 - 1/2000. ELISA: 1/20000. Not yet tested in other applications.
Format	Liquid in PBS containing 50% glycerol, 0.5% BSA and 0.09% (W/V) sodium azide.
Storage Conditions	-20°C

Protein Information

Name	RFTN1
Synonyms	KIAA0084
Function	Involved in protein trafficking via association with clathrin and AP2 complex (PubMed: 21266579 , PubMed: 27022195). Upon bacterial lipopolysaccharide stimulation, mediates internalization of TLR4 to endosomes in dendritic cells and macrophages; and internalization of poly(I:C) to TLR3-positive endosomes in myeloid dendritic cells and epithelial cells; resulting in activation of TICAM1-mediated signaling and subsequent IFNB1 production (PubMed: 21266579 , PubMed: 27022195). Involved in T-cell antigen receptor-mediated signaling by regulating tyrosine kinase LCK localization, T-cell dependent antibody production and cytokine secretion (By similarity). May regulate B-cell antigen receptor-mediated signaling (PubMed: 12805216). May play a pivotal role in the formation and/or maintenance of lipid rafts (PubMed: 12805216).
Cellular Location	Cell membrane; Lipid-anchor. Cytoplasm. Membrane raft. Endosome. Early endosome. Note=Translocates from cytoplasm to cell membrane where it

colocalizes with poly (I:C) and then moves to endosomes where it colocalizes with TLR3 (PubMed:21266579) Translocates from cytoplasm to cell membrane where it colocalizes with TLR4 and then together with TLR4 moves to endosomes, upon lipopolysaccharide stimulation (PubMed:27022195)

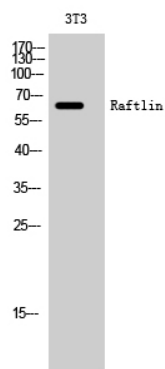
Tissue Location

Expressed in B-cells (at protein level) (PubMed:12805216). Expressed in dendritic cells and macrophages (PubMed:21266579, PubMed:27022195).

Background

Involved in protein trafficking via association with clathrin and AP2 complex (PubMed: [27022195](#), PubMed:[21266579](#)). Upon bacterial lipopolysaccharide stimulation, mediates internalization of TLR4 to endosomes in dendritic cells and macrophages; and internalization of poly(I:C) to TLR3-positive endosomes in myeloid dendritic cells and epithelial cells; resulting in activation of TICAM1-mediated signaling and subsequent IFNB1 production (PubMed:[27022195](#), PubMed:[21266579](#)). Involved in T-cell antigen receptor-mediated signaling by regulating tyrosine kinase LCK localization, T-cell dependent antibody production and cytokine secretion (By similarity). May regulate B-cell antigen receptor- mediated signaling (PubMed:[12805216](#)). May play a pivotal role in the formation and/or maintenance of lipid rafts (PubMed:[12805216](#)).

Images



Western Blot analysis of 3T3 cells using Raftlin Polyclonal Antibody

Please note: All products are 'FOR RESEARCH USE ONLY. NOT FOR USE IN DIAGNOSTIC OR THERAPEUTIC PROCEDURES'.