

Rag A/B Polyclonal Antibody

Catalog # AP72173

Product Information

Application	WB, IHC-P
Primary Accession	Q7L523 , Q5VZM2
Reactivity	Human, Mouse, Rat
Host	Rabbit
Clonality	Polyclonal
Calculated MW	36566

Additional Information

Gene ID	10670
Other Names	RRAGA; Ras-related GTP-binding protein A; Rag A; RagA; Adenovirus E3 14.7 kDa-interacting protein 1; FIP-1; RRAGB; Ras-related GTP-binding protein B; Rag B; RagB
Dilution	WB~~Western Blot: 1/500 - 1/2000. Immunohistochemistry: 1/100 - 1/300. ELISA: 1/20000. Not yet tested in other applications. IHC-P~~N/A
Format	Liquid in PBS containing 50% glycerol, 0.5% BSA and 0.09% (W/V) sodium azide.
Storage Conditions	-20°C

Protein Information

Name	RRAGA (HGNC:16963)
Function	<p>Guanine nucleotide-binding protein that plays a crucial role in the cellular response to amino acid availability through regulation of the mTORC1 signaling cascade (PubMed:20381137, PubMed:24095279, PubMed:25936802, PubMed:31601708, PubMed:31601764, PubMed:38103557). Forms heterodimeric Rag complexes with RagC/RRAGC or RagD/RRAGD and cycles between an inactive GDP-bound and an active GTP-bound form: RagA/RRAGA is in its active form when GTP-bound RagA/RRAGA forms a complex with GDP-bound RagC/RRAGC (or RagD/RRAGD) and in an inactive form when GDP-bound RagA/RRAGA heterodimerizes with GTP-bound RagC/RRAGC (or RagD/RRAGD) (PubMed:20381137, PubMed:24095279, PubMed:25936802, PubMed:31601708, PubMed:31601764, PubMed:32868926). In its GTP-bound active form, promotes the recruitment of mTORC1 to the lysosomes and its subsequent activation by the GTPase RHEB (PubMed:20381137, PubMed:25936802, PubMed:31601708, PubMed:31601764). Involved in the RCC1/Ran-GTPase pathway (PubMed:9394008). May play a direct role in a TNF-alpha signaling pathway leading to induction of cell death</p>

(PubMed:[8995684](#)).

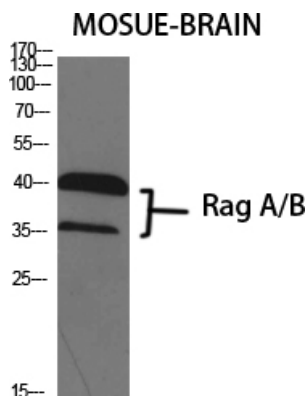
Cellular Location

Cytoplasm. Nucleus. Lysosome membrane Note=Predominantly cytoplasmic (PubMed:8995684, PubMed:9394008) Recruited to the lysosome surface by the Ragulator complex (PubMed:20381137, PubMed:28935770, PubMed:29158492). May shuttle between the cytoplasm and nucleus, depending on the bound nucleotide state (PubMed:8995684, PubMed:9394008). Colocalizes in vivo with adenovirus E3-14.7K mainly to the cytoplasm especially near the nuclear membrane and in discrete foci on or near the plasma membrane (PubMed:8995684).

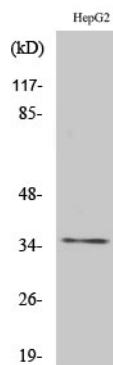
Tissue Location

Ubiquitously expressed with highest levels of expression in skeletal muscle, heart, and brain

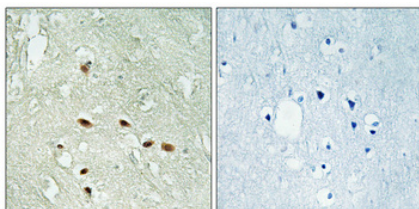
Images



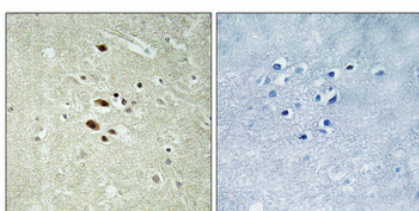
Western Blot analysis of various cells using Rag A/B Polyclonal Antibody diluted at 1 : 1000



Western Blot analysis of HepG2 cells using Rag A/B Polyclonal Antibody diluted at 1 : 1000



Immunohistochemical analysis of paraffin-embedded Human brain. Antibody was diluted at 1:100(4°,overnight). High-pressure and temperature Tris-EDTA,pH8.0 was used for antigen retrieval. Negative contrl (right) obtaned from antibody was pre-absorbed by immunogen peptide.



Immunohistochemical analysis of paraffin-embedded Human brain. Antibody was diluted at 1:100(4°,overnight). High-pressure and temperature Tris-EDTA,pH8.0 was used for antigen retrieval. Negative contrl (right) obtaned from antibody was pre-absorbed by immunogen peptide.

Please note: All products are 'FOR RESEARCH USE ONLY. NOT FOR USE IN DIAGNOSTIC OR THERAPEUTIC PROCEDURES'.