

RAGE Polyclonal Antibody

Catalog # AP72177

Product Information

Application	WB, IHC-P, IF
Primary Accession	Q9UQ07
Reactivity	Human
Host	Rabbit
Clonality	Polyclonal
Calculated MW	48014

Additional Information

Gene ID	5891
Other Names	MOK; RAGE; RAGE1; MAPK/MAK/MRK overlapping kinase; MOK protein kinase; Renal tumor antigen 1; RAGE-1
Dilution	WB~~Western Blot: 1/500 - 1/2000. Immunohistochemistry: 1/100 - 1/300. Immunofluorescence: 1/200 - 1/1000. ELISA: 1/5000. Not yet tested in other applications. IHC-P~~N/A IF~~1:50~200
Format	Liquid in PBS containing 50% glycerol, 0.5% BSA and 0.09% (W/V) sodium azide.
Storage Conditions	-20°C

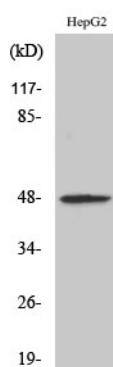
Protein Information

Name	MOK
Synonyms	RAGE, RAGE1
Function	Able to phosphorylate several exogenous substrates and to undergo autophosphorylation. Negatively regulates cilium length in a cAMP and mTORC1 signaling-dependent manner.
Cellular Location	Cytoplasm {ECO:0000250 UniProtKB:Q9WVS4}. Cell projection, cilium {ECO:0000250 UniProtKB:Q9WVS4}. Nucleus {ECO:0000250 UniProtKB:Q9WVS4}
Tissue Location	Expressed in heart, brain, lung, kidney, and pancreas, and at very low levels in placenta, liver and skeletal muscle. Detected in retina

Background

Able to phosphorylate several exogenous substrates and to undergo autophosphorylation. Negatively regulates cilium length in a cAMP and mTORC1 signaling-dependent manner.

Images



Western Blot analysis of various cells using RAGE Polyclonal Antibody

Please note: All products are 'FOR RESEARCH USE ONLY. NOT FOR USE IN DIAGNOSTIC OR THERAPEUTIC PROCEDURES'.