

# Ran BP-6 Polyclonal Antibody

Catalog # AP72183

## Product Information

---

<b>Application</b>	WB, E, IHC-P
<b>Primary Accession</b>	<a href="#">O60518</a>
<b>Reactivity</b>	Human, Mouse, Rat, Monkey
<b>Host</b>	Rabbit
<b>Clonality</b>	Polyclonal
<b>Calculated MW</b>	124714

## Additional Information

---

<b>Gene ID</b>	26953
<b>Other Names</b>	RANBP6; Ran-binding protein 6; RanBP6
<b>Dilution</b>	WB~~Western Blot: 1/500 - 1/2000. ELISA: 1/10000. Not yet tested in other applications. E~~N/A IHC-P~~N/A
<b>Format</b>	Liquid in PBS containing 50% glycerol, 0.5% BSA and 0.09% (W/V) sodium azide.
<b>Storage Conditions</b>	-20°C

## Protein Information

---

<b>Name</b>	RANBP6
<b>Function</b>	May function in nuclear protein import as nuclear transport receptor.
<b>Cellular Location</b>	Cytoplasm. Nucleus.

## Background

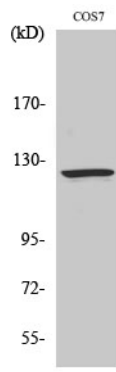
---

May function in nuclear protein import as nuclear transport receptor.

## Images

---

Western Blot analysis of various cells using Ran BP-6 Polyclonal Antibody



Please note: All products are 'FOR RESEARCH USE ONLY. NOT FOR USE IN DIAGNOSTIC OR THERAPEUTIC PROCEDURES'.