

RASSF6 Polyclonal Antibody

Catalog # AP72196

Product Information

Application	WB
Primary Accession	Q6ZTQ3
Reactivity	Human
Host	Rabbit
Clonality	Polyclonal
Calculated MW	43384

Additional Information

Gene ID	166824
Other Names	RASSF6; Ras association domain-containing protein 6
Dilution	WB~~Western Blot: 1/500 - 1/2000. ELISA: 1/10000. Not yet tested in other applications.
Format	Liquid in PBS containing 50% glycerol, 0.5% BSA and 0.09% (W/V) sodium azide.
Storage Conditions	-20°C

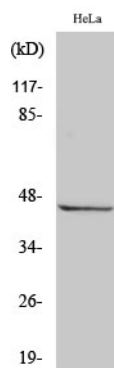
Protein Information

Name	RASSF6
Function	Involved in the induction of apoptosis, through both caspase- dependent and caspase-independent pathways. May act as a Ras effector protein. May suppress the serum-induced basal levels of NF-kappa-B (By similarity).
Tissue Location	Highest expression in thymus, kidney and placenta. Also detected in colon, small intestine and lung. Tends to be down- regulated in 30-60% of tumors derived from breast, colon, kidney liver, rectum, pancreas, stomach and the thyroid gland compared to the normal counterpart.

Background

Involved in the induction of apoptosis, through both caspase-dependent and caspase-independent pathways. May act as a Ras effector protein. May suppress the serum-induced basal levels of NF-kappa-B (By similarity).

Images



Western Blot analysis of various cells using RASSF6 Polyclonal Antibody

Please note: All products are 'FOR RESEARCH USE ONLY. NOT FOR USE IN DIAGNOSTIC OR THERAPEUTIC PROCEDURES'.