

RBM16 Polyclonal Antibody

Catalog # AP72209

Product Information

Application	WB, IHC-P
Primary Accession	Q9UPN6
Reactivity	Human, Mouse, Rat
Host	Rabbit
Clonality	Polyclonal
Calculated MW	140519

Additional Information

Gene ID	22828
Other Names	SCAF8; CCAP7; KIAA1116; RBM16; Protein SCAF8; CDC5L complex-associated protein 7; RNA-binding motif protein 16; SR-related and CTD-associated factor 8
Dilution	WB~~Western Blot: 1/500 - 1/2000. ELISA: 1/10000. Not yet tested in other applications. IHC-P~~N/A
Format	Liquid in PBS containing 50% glycerol, 0.5% BSA and 0.09% (W/V) sodium azide.
Storage Conditions	-20°C

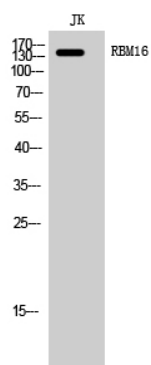
Protein Information

Name	SCAF8 {ECO:0000303 PubMed:9528809, ECO:0000312 HGNC:HGNC:20959}
Function	Anti-terminator protein required to prevent early mRNA termination during transcription (PubMed: 31104839). Together with SCAF4, acts by suppressing the use of early, alternative poly(A) sites, thereby preventing the accumulation of non-functional truncated proteins (PubMed: 31104839). Mechanistically, associates with the phosphorylated C-terminal heptapeptide repeat domain (CTD) of the largest RNA polymerase II subunit (POLR2A), and subsequently binds nascent RNA upstream of early polyadenylation sites to prevent premature mRNA transcript cleavage and polyadenylation (PubMed: 31104839). Independently of SCAF4, also acts as a positive regulator of transcript elongation (PubMed: 31104839).
Cellular Location	Nucleus. Nucleus matrix. Note=Detected in granular nuclear foci which correspond to sites of active transcription

Background

May play a role in mRNA processing.

Images



Western Blot analysis of JK cells using RBM16 Polyclonal Antibody cells nucleus extracted by Minute TM Cytoplasmic and Nuclear Fractionation kit (SC-003, Invent biotech, MN, USA).

Please note: All products are 'FOR RESEARCH USE ONLY. NOT FOR USE IN DIAGNOSTIC OR THERAPEUTIC PROCEDURES'.