

# RCL1 Polyclonal Antibody

Catalog # AP72216

## Product Information

---

<b>Application</b>	WB, IHC-P
<b>Primary Accession</b>	<a href="#">Q9Y2P8</a>
<b>Reactivity</b>	Human, Mouse, Rat
<b>Host</b>	Rabbit
<b>Clonality</b>	Polyclonal
<b>Calculated MW</b>	40843

## Additional Information

---

<b>Gene ID</b>	10171
<b>Other Names</b>	RCL1; RNAC; RPC2; RPCL1; RTC2; HSPC338; RNA 3'-terminal phosphate cyclase-like protein
<b>Dilution</b>	WB~~Western Blot: 1/500 - 1/2000. ELISA: 1/40000. Not yet tested in other applications. IHC-P~~N/A
<b>Format</b>	Liquid in PBS containing 50% glycerol, 0.5% BSA and 0.09% (W/V) sodium azide.
<b>Storage Conditions</b>	-20°C

## Protein Information

---

<b>Name</b>	RCL1 ( <a href="#">HGNC:17687</a> )
<b>Synonyms</b>	RNAC, RPC2, RPCL1, RTC2
<b>Function</b>	As part of the small subunit (SSU) processome, it plays a role in 40S-ribosomal-subunit biogenesis in the early pre-rRNA processing steps at sites A0, A1 and A2 that are required for proper maturation of the 18S RNA (By similarity). Activates BMS1 by promoting GDP/GTP exchange (By similarity). Does not have cyclase activity (By similarity).
<b>Cellular Location</b>	Nucleus, nucleolus

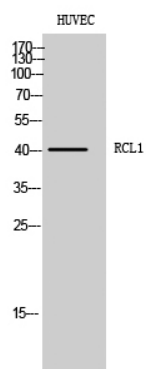
## Background

---

Does not have cyclase activity. Plays a role in 40S- ribosomal-subunit biogenesis in the early pre-rRNA processing steps at sites A0, A1 and A2 that are required for proper maturation of the 18S RNA (By similarity).

## Images

---



Western Blot analysis of HUVEC cells using RCL1 Polyclonal Antibody cells nucleus extracted by Minute TM Cytoplasmic and Nuclear Fractionation kit (SC-003, Inventbiotech, MN, USA).

Please note: All products are 'FOR RESEARCH USE ONLY. NOT FOR USE IN DIAGNOSTIC OR THERAPEUTIC PROCEDURES'.