

Repetin Polyclonal Antibody

Catalog # AP72235

Product Information

Application	WB
Primary Accession	Q6XPR3
Reactivity	Human
Host	Rabbit
Clonality	Polyclonal
Calculated MW	90731

Additional Information

Gene ID	126638
Other Names	RPTN; Repetin
Dilution	WB~~Western Blot: 1/500 - 1/2000. ELISA: 1/5000. Not yet tested in other applications.
Format	Liquid in PBS containing 50% glycerol, 0.5% BSA and 0.09% (W/V) sodium azide.
Storage Conditions	-20°C

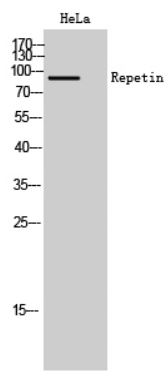
Protein Information

Name	RPTN
Function	Involved in the cornified cell envelope formation. Multifunctional epidermal matrix protein. Reversibly binds calcium.
Cellular Location	Secreted, extracellular space, extracellular matrix
Tissue Location	Expression is scattered in the normal epidermis but strong in the acrosyringium, the inner hair root sheath and in the filiform papilli of the tongue.

Background

Involved in the cornified cell envelope formation. Multifunctional epidermal matrix protein. Reversibly binds calcium.

Images



Western Blot analysis of HeLa cells using Repetin Polyclonal Antibody

Please note: All products are 'FOR RESEARCH USE ONLY. NOT FOR USE IN DIAGNOSTIC OR THERAPEUTIC PROCEDURES'.