

RGS1 Polyclonal Antibody

Catalog # AP72253

Product Information

Application	WB, IHC-P
Primary Accession	Q08116
Reactivity	Human, Mouse, Rat
Host	Rabbit
Clonality	Polyclonal
Calculated MW	23858

Additional Information

Gene ID	5996
Other Names	RGS1; 1R20; BL34; IER1; Regulator of G-protein signaling 1; RGS1; B-cell activation protein BL34; Early response protein 1R20
Dilution	WB~~Western Blot: 1/500 - 1/2000. Immunohistochemistry: 1/100 - 1/300. ELISA: 1/20000. Not yet tested in other applications. IHC-P~~N/A
Format	Liquid in PBS containing 50% glycerol, 0.5% BSA and 0.09% (W/V) sodium azide.
Storage Conditions	-20°C

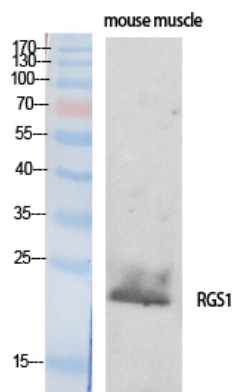
Protein Information

Name	RGS1
Synonyms	1R20, BL34, IER1
Function	Regulates G protein-coupled receptor signaling cascades, including signaling downstream of the N-formylpeptide chemoattractant receptors and leukotriene receptors (PubMed: 10480894). Inhibits B cell chemotaxis toward CXCL12 (By similarity). Inhibits signal transduction by increasing the GTPase activity of G protein alpha subunits thereby driving them into their inactive GDP-bound form (PubMed: 10480894 , PubMed: 18434541).
Cellular Location	Cell membrane; Peripheral membrane protein; Cytoplasmic side. Cytoplasm, cytosol
Tissue Location	Detected in peripheral blood monocytes (PubMed:10480894). Expression is relatively low in B-cells and chronic lymphocytic leukemia B-cells; however, in other types of malignant B- cell such as non-Hodgkin lymphoma and hairy cell leukemia, expression is constitutively high (PubMed:8473738).

Background

Regulates G protein-coupled receptor signaling cascades, including signaling downstream of the N-formylpeptide chemoattractant receptors and leukotriene receptors (PubMed:[10480894](#)). Inhibits B cell chemotaxis toward CXCL12 (By similarity). Inhibits signal transduction by increasing the GTPase activity of G protein alpha subunits thereby driving them into their inactive GDP-bound form (PubMed:[10480894](#), PubMed:[18434541](#)).

Images



Western Blot analysis of various cells using RGS1 Polyclonal Antibody

Please note: All products are 'FOR RESEARCH USE ONLY. NOT FOR USE IN DIAGNOSTIC OR THERAPEUTIC PROCEDURES'.