

# Rho GDI $\gamma$ Polyclonal Antibody

Catalog # AP72265

## Product Information

---

<b>Application</b>	WB
<b>Primary Accession</b>	<a href="#">Q99819</a>
<b>Reactivity</b>	Human
<b>Host</b>	Rabbit
<b>Clonality</b>	Polyclonal
<b>Calculated MW</b>	25098

## Additional Information

---

<b>Gene ID</b>	398
<b>Other Names</b>	ARHGDIG; Rho GDP-dissociation inhibitor 3; Rho GDI 3; Rho-GDI gamma
<b>Dilution</b>	WB~~Western Blot: 1/500 - 1/2000. ELISA: 1/10000. Not yet tested in other applications.
<b>Format</b>	Liquid in PBS containing 50% glycerol, 0.5% BSA and 0.09% (W/V) sodium azide.
<b>Storage Conditions</b>	-20°C

## Protein Information

---

<b>Name</b>	ARHGDIG
<b>Function</b>	Inhibits GDP/GTP exchange reaction of RhoB. Interacts specifically with the GDP- and GTP-bound forms of post-translationally processed Rhob and Rhog proteins, both of which show a growth-regulated expression in mammalian cells. Stimulates the release of the GDP-bound but not the GTP-bound RhoB protein. Also inhibits the GDP/GTP exchange of RhoB but shows less ability to inhibit the dissociation of prebound GTP.
<b>Cellular Location</b>	Cytoplasm.
<b>Tissue Location</b>	Primarily expressed in pancreas and brain.

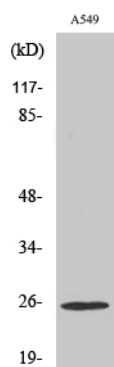
## Background

---

Inhibits GDP/GTP exchange reaction of RhoB. Interacts specifically with the GDP- and GTP-bound forms of post- translationally processed Rhob and Rhog proteins, both of which show a growth-regulated expression in mammalian cells. Stimulates the release of the GDP-bound but not the GTP-bound RhoB protein. Also inhibits the GDP/GTP exchange of RhoB but shows less ability to inhibit the dissociation of prebound GTP.

## Images

---



Western Blot analysis of various cells using Rho GDI $\gamma$  Polyclonal Antibody

Please note: All products are 'FOR RESEARCH USE ONLY. NOT FOR USE IN DIAGNOSTIC OR THERAPEUTIC PROCEDURES'.