

# Ribosomal Protein L12 Polyclonal Antibody

Catalog # AP72278

## Product Information

---

<b>Application</b>	WB, IHC-P
<b>Primary Accession</b>	<a href="#">P30050</a>
<b>Reactivity</b>	Human, Mouse, Rat
<b>Host</b>	Rabbit
<b>Clonality</b>	Polyclonal
<b>Calculated MW</b>	17819

## Additional Information

---

<b>Gene ID</b>	6136
<b>Other Names</b>	RPL12; 60S ribosomal protein L12
<b>Dilution</b>	WB~~1/500 - 1/2000 IHC-P~~1/100 - 1/300
<b>Format</b>	Liquid in PBS containing 50% glycerol, 0.5% BSA and 0.09% (W/V) sodium azide.
<b>Storage Conditions</b>	-20°C

## Protein Information

---

<b>Name</b>	RPL12
<b>Function</b>	Component of the large ribosomal subunit (PubMed: <a href="#">25901680</a> ). The ribosome is a large ribonucleoprotein complex responsible for the synthesis of proteins in the cell (PubMed: <a href="#">25901680</a> ). Binds directly to 26S ribosomal RNA (PubMed: <a href="#">25901680</a> ).
<b>Cellular Location</b>	Cytoplasm

## Background

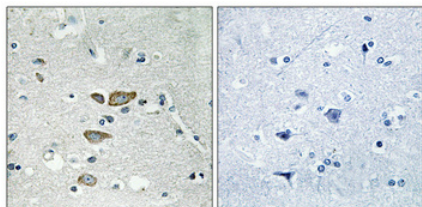
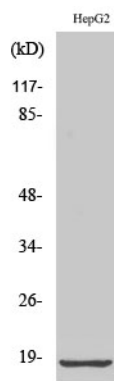
---

Binds directly to 26S ribosomal RNA.

## Images

---

Western Blot analysis of various cells using Ribosomal Protein L12 Polyclonal Antibody diluted at 1 : 2000



Immunohistochemical analysis of paraffin-embedded Human brain. Antibody was diluted at 1:100(4°,overnight). High-pressure and temperature Tris-EDTA,pH8.0 was used for antigen retrieval. Negative control (right) obtained from antibody was pre-absorbed by immunogen peptide.

Please note: All products are 'FOR RESEARCH USE ONLY. NOT FOR USE IN DIAGNOSTIC OR THERAPEUTIC PROCEDURES'.