

Ribosomal Protein L3 Polyclonal Antibody

Catalog # AP72288

Product Information

Application	WB, IHC-P
Primary Accession	P39023
Reactivity	Human, Mouse, Rat
Host	Rabbit
Clonality	Polyclonal
Calculated MW	46109

Additional Information

Gene ID	6122
Other Names	RPL3; OK/SW-cl.32; 60S ribosomal protein L3; HIV-1 TAR RNA-binding protein B; TARBP-B
Dilution	WB~~Western Blot: 1/500 - 1/2000. Immunohistochemistry: 1/100 - 1/300. ELISA: 1/20000. Not yet tested in other applications. IHC-P~~N/A
Format	Liquid in PBS containing 50% glycerol, 0.5% BSA and 0.09% (W/V) sodium azide.
Storage Conditions	-20°C

Protein Information

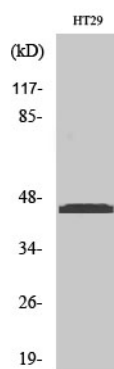
Name	RPL3
Function	Component of the large ribosomal subunit (PubMed: 12962325 , PubMed: 23636399 , PubMed: 32669547 , PubMed: 35674491). The ribosome is a large ribonucleoprotein complex responsible for the synthesis of proteins in the cell (PubMed: 12962325 , PubMed: 23636399 , PubMed: 32669547).
Cellular Location	Nucleus, nucleolus. Cytoplasm

Background

The L3 protein is a component of the large subunit of cytoplasmic ribosomes.

Images

Western Blot analysis of various cells using Ribosomal



Protein L3 Polyclonal Antibody

Please note: All products are 'FOR RESEARCH USE ONLY. NOT FOR USE IN DIAGNOSTIC OR THERAPEUTIC PROCEDURES'.