

# Ribosomal Protein L34 Polyclonal Antibody

Catalog # AP72291

## Product Information

Application	WB, IHC-P, IF
Primary Accession	<a href="#">P49207</a>
Reactivity	Human, Mouse, Rat
Host	Rabbit
Clonality	Polyclonal
Calculated MW	13293

## Additional Information

Gene ID	6164
Other Names	RPL34; 60S ribosomal protein L34
Dilution	WB~~Western Blot: 1/500 - 1/2000. Immunohistochemistry: 1/100 - 1/300. Immunofluorescence: 1/200 - 1/1000. ELISA: 1/20000. Not yet tested in other applications. IHC-P~~Western Blot: 1/500 - 1/2000. Immunohistochemistry: 1/100 - 1/300. Immunofluorescence: 1/200 - 1/1000. ELISA: 1/20000. Not yet tested in other applications. IF~~1:50~200
Format	Liquid in PBS containing 50% glycerol, 0.5% BSA and 0.09% (W/V) sodium azide.
Storage Conditions	-20°C

## Protein Information

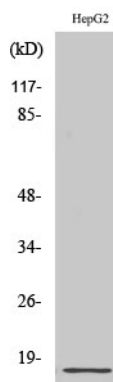
Name	RPL34
Function	Component of the large ribosomal subunit (PubMed: <a href="#">12962325</a> , PubMed: <a href="#">23636399</a> , PubMed: <a href="#">25901680</a> , PubMed: <a href="#">25957688</a> , PubMed: <a href="#">32669547</a> ). The ribosome is a large ribonucleoprotein complex responsible for the synthesis of proteins in the cell (PubMed: <a href="#">12962325</a> , PubMed: <a href="#">23636399</a> , PubMed: <a href="#">25901680</a> , PubMed: <a href="#">25957688</a> , PubMed: <a href="#">32669547</a> ).
Cellular Location	Cytoplasm, cytosol. Cytoplasm Endoplasmic reticulum {ECO:0000250 UniProtKB:Q29223}. Note=Detected on cytosolic polysomes (PubMed:25957688). Detected in ribosomes that are associated with the rough endoplasmic reticulum (By similarity) {ECO:0000250 UniProtKB:Q29223, ECO:0000269 PubMed:25957688}

## Background

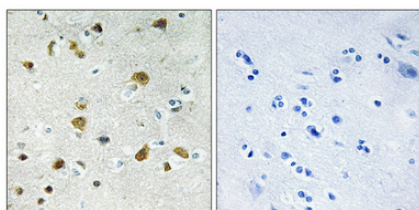
Component of the large ribosomal subunit.

## Images

---



Western Blot analysis of various cells using Ribosomal Protein L34 Polyclonal Antibody diluted at 1 : 500



Immunohistochemical analysis of paraffin-embedded Human brain. Antibody was diluted at 1:100(4°,overnight). High-pressure and temperature Tris-EDTA,pH8.0 was used for antigen retrieval. Negative contrl (right) obtained from antibody was pre-absorbed by immunogen peptide.

Please note: All products are 'FOR RESEARCH USE ONLY. NOT FOR USE IN DIAGNOSTIC OR THERAPEUTIC PROCEDURES'.