

# Ribosomal Protein L35 Polyclonal Antibody

Catalog # AP72292

## Product Information

---

<b>Application</b>	WB, IHC-P, IF, ICC, E
<b>Primary Accession</b>	<a href="#">P42766</a>
<b>Reactivity</b>	Human, Mouse, Rat
<b>Host</b>	Rabbit
<b>Clonality</b>	Polyclonal
<b>Calculated MW</b>	14551

## Additional Information

---

<b>Gene ID</b>	11224
<b>Other Names</b>	RPL35; 60S ribosomal protein L35
<b>Dilution</b>	WB~~Western Blot: 1/500 - 1/2000. Immunohistochemistry: 1/100 - 1/300. ELISA: 1/10000. Not yet tested in other applications. IHC-P~~N/A IF~~1:50~200 ICC~~N/A E~~N/A
<b>Format</b>	Liquid in PBS containing 50% glycerol, 0.5% BSA and 0.09% (W/V) sodium azide.
<b>Storage Conditions</b>	-20°C

## Protein Information

---

<b>Name</b>	RPL35
<b>Function</b>	Component of the large ribosomal subunit (PubMed: <a href="#">12962325</a> , PubMed: <a href="#">23636399</a> , PubMed: <a href="#">32669547</a> ). The ribosome is a large ribonucleoprotein complex responsible for the synthesis of proteins in the cell (PubMed: <a href="#">12962325</a> , PubMed: <a href="#">23636399</a> , PubMed: <a href="#">32669547</a> ).
<b>Cellular Location</b>	Cytoplasm.

## Background

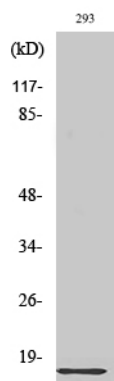
---

Component of the large ribosomal subunit.

## Images

---

Western Blot analysis of various cells using Ribosomal



Protein L35 Polyclonal Antibody diluted at 1 : 2000

Please note: All products are 'FOR RESEARCH USE ONLY. NOT FOR USE IN DIAGNOSTIC OR THERAPEUTIC PROCEDURES'.