

Ribosomal Protein L7 Polyclonal Antibody

Catalog # AP72301

Product Information

Application	WB, IHC-P
Primary Accession	P18124
Reactivity	Human, Mouse, Rat
Host	Rabbit
Clonality	Polyclonal
Calculated MW	29226

Additional Information

Gene ID	6129
Other Names	RPL7; 60S ribosomal protein L7
Dilution	WB~~Western Blot: 1/500 - 1/2000. Immunohistochemistry: 1/100 - 1/300. ELISA: 1/10000. Not yet tested in other applications. IHC-P~~N/A
Format	Liquid in PBS containing 50% glycerol, 0.5% BSA and 0.09% (W/V) sodium azide.
Storage Conditions	-20°C

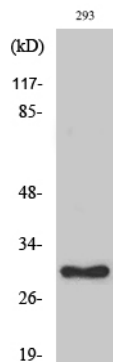
Protein Information

Name	RPL7
Function	Component of the large ribosomal subunit (PubMed: 12962325 , PubMed: 23636399 , PubMed: 32669547). The ribosome is a large ribonucleoprotein complex responsible for the synthesis of proteins in the cell (PubMed: 12962325 , PubMed: 23636399 , PubMed: 32669547). Binds to G-rich structures in 28S rRNA and in mRNAs (PubMed: 12962325). Plays a regulatory role in the translation apparatus; inhibits cell-free translation of mRNAs (PubMed: 12962325).
Cellular Location	Cytoplasm.

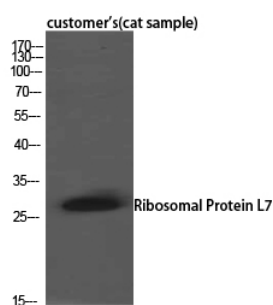
Background

Component of the large ribosomal subunit (PubMed: [12962325](#)). Binds to G-rich structures in 28S rRNA and in mRNAs. Plays a regulatory role in the translation apparatus; inhibits cell-free translation of mRNAs.

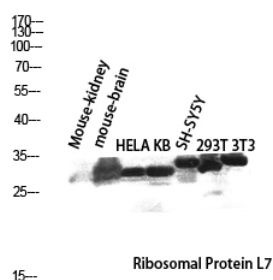
Images



Western Blot analysis of various cells using Ribosomal Protein L7 Polyclonal Antibody diluted at 1 : 2000



Western Blot analysis of customer's(cat sample) using Ribosomal Protein L7 Polyclonal Antibody. Antibody was diluted at 1:2000



Western blot analysis of Mouse-kidney mouse-brain HELA KB SH-SY5Y 293T 3T3 lysis using Ribosomal Protein L7 antibody. Antibody was diluted at 1:2000

Please note: All products are 'FOR RESEARCH USE ONLY. NOT FOR USE IN DIAGNOSTIC OR THERAPEUTIC PROCEDURES'.