

Ribosomal Protein S12 Polyclonal Antibody

Catalog # AP72305

Product Information

Application	WB, IHC-P, IF
Primary Accession	P25398
Reactivity	Human, Mouse, Rat
Host	Rabbit
Clonality	Polyclonal
Calculated MW	14515

Additional Information

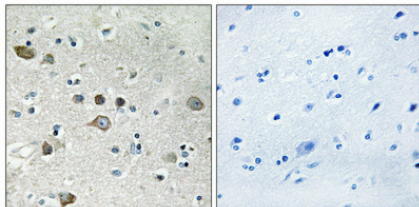
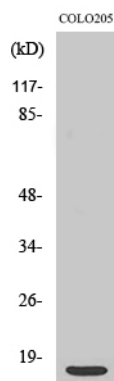
Gene ID	6206
Other Names	RPS12; 40S ribosomal protein S12
Dilution	WB~~Western Blot: 1/500 - 1/2000. Immunohistochemistry: 1/100 - 1/300. Immunofluorescence: 1/200 - 1/1000. ELISA: 1/40000. Not yet tested in other applications. IHC-P~~N/A IF~~1:50~200
Format	Liquid in PBS containing 50% glycerol, 0.5% BSA and 0.09% (W/V) sodium azide.
Storage Conditions	-20°C

Protein Information

Name	RPS12 (HGNC:10385)
Function	Part of the small subunit (SSU) processome, first precursor of the small eukaryotic ribosomal subunit. During the assembly of the SSU processome in the nucleolus, many ribosome biogenesis factors, an RNA chaperone and ribosomal proteins associate with the nascent pre- rRNA and work in concert to generate RNA folding, modifications, rearrangements and cleavage as well as targeted degradation of pre- ribosomal RNA by the RNA exosome (PubMed: 34516797). Subunit of the 40S ribosomal complex (By similarity).
Cellular Location	Cytoplasm. Nucleus, nucleolus

Images

Western Blot analysis of various cells using Ribosomal Protein S12 Polyclonal Antibody



Immunohistochemical analysis of paraffin-embedded Human brain. Antibody was diluted at 1:100(4°,overnight). High-pressure and temperature Tris-EDTA,pH8.0 was used for antigen retrieval. Negative control (right) obtained from antibody was pre-absorbed by immunogen peptide.

Please note: All products are 'FOR RESEARCH USE ONLY. NOT FOR USE IN DIAGNOSTIC OR THERAPEUTIC PROCEDURES'.