

# Ribosomal Protein S4Y1 Polyclonal Antibody

Catalog # AP72319

## Product Information

---

<b>Application</b>	WB, IHC-P, IF
<b>Primary Accession</b>	<a href="#">P22090</a>
<b>Reactivity</b>	Human
<b>Host</b>	Rabbit
<b>Clonality</b>	Polyclonal
<b>Calculated MW</b>	29456

## Additional Information

---

<b>Gene ID</b>	6192
<b>Other Names</b>	RPS4Y1; RPS4Y; 40S ribosomal protein S4; Y isoform 1
<b>Dilution</b>	WB~~Western Blot: 1/500 - 1/2000. Immunohistochemistry: 1/100 - 1/300. Immunofluorescence: 1/200 - 1/1000. ELISA: 1/20000. Not yet tested in other applications. IHC-P~~N/A IF~~1:50~200
<b>Format</b>	Liquid in PBS containing 50% glycerol, 0.5% BSA and 0.09% (W/V) sodium azide.
<b>Storage Conditions</b>	-20°C

## Protein Information

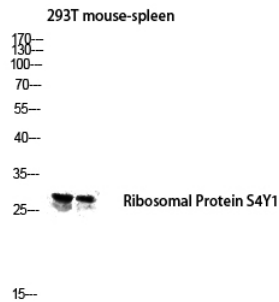
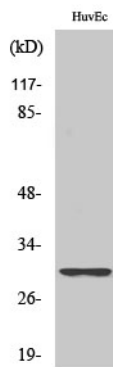
---

<b>Name</b>	RPS4Y1
<b>Synonyms</b>	RPS4Y

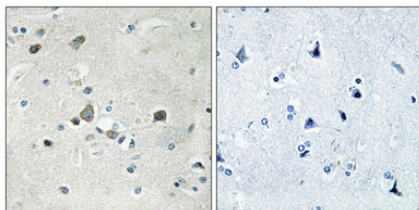
## Images

---

Western Blot analysis of various cells using Ribosomal Protein S4Y1 Polyclonal Antibody diluted at 1 : 1000



Western blot analysis of 293T mouse-spleen lysis using Ribosomal Protein S4Y1 antibody. Antibody was diluted at 1:1000



Immunohistochemical analysis of paraffin-embedded Human brain. Antibody was diluted at 1:100(4°,overnight). High-pressure and temperature Tris-EDTA,pH8.0 was used for antigen retrieval. Negative contrl (right) obtaned from antibody was pre-absorbed by immunogen peptide.

Please note: All products are 'FOR RESEARCH USE ONLY. NOT FOR USE IN DIAGNOSTIC OR THERAPEUTIC PROCEDURES'.