

RIN3 Polyclonal Antibody

Catalog # AP72328

Product Information

Application	WB
Primary Accession	Q8TB24
Reactivity	Human
Host	Rabbit
Clonality	Polyclonal
Calculated MW	107854

Additional Information

Gene ID	79890
Other Names	RIN3; Ras and Rab interactor 3; Ras interaction/interference protein 3
Dilution	WB~~Western Blot: 1/500 - 1/2000. ELISA: 1/10000. Not yet tested in other applications.
Format	Liquid in PBS containing 50% glycerol, 0.5% BSA and 0.09% (W/V) sodium azide.
Storage Conditions	-20°C

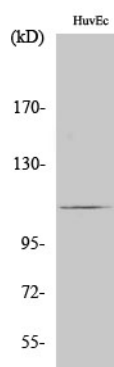
Protein Information

Name	RIN3
Function	Ras effector protein that functions as a guanine nucleotide exchange (GEF) for RAB5B and RAB31, by exchanging bound GDP for free GTP. Required for normal RAB31 function.
Cellular Location	Cytoplasm. Cytoplasmic vesicle. Early endosome. Note=Activation of tyrosine phosphorylation signaling induces translocation to cytoplasmic vesicles.
Tissue Location	Widely expressed..

Background

Ras effector protein that functions as a guanine nucleotide exchange (GEF) for RAB5B and RAB31, by exchanging bound GDP for free GTP. Required for normal RAB31 function.

Images



Western Blot analysis of various cells using RIN3 Polyclonal Antibody

Please note: All products are 'FOR RESEARCH USE ONLY. NOT FOR USE IN DIAGNOSTIC OR THERAPEUTIC PROCEDURES'.