

RRP22 Polyclonal Antibody

Catalog # AP72360

Product Information

Application	WB
Primary Accession	Q92737
Reactivity	Human, Mouse
Host	Rabbit
Clonality	Polyclonal
Calculated MW	22541

Additional Information

Gene ID	10633
Other Names	RASL10A; RRP22; Ras-like protein family member 10A; Ras-like protein RRP22; Ras-related protein on chromosome 22
Dilution	WB~~Western Blot: 1/500 - 1/2000. ELISA: 1/40000. Not yet tested in other applications.
Format	Liquid in PBS containing 50% glycerol, 0.5% BSA and 0.09% (W/V) sodium azide.
Storage Conditions	-20°C

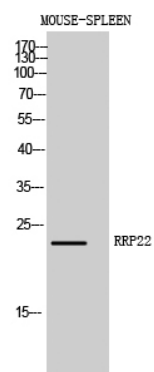
Protein Information

Name	RASL10A
Synonyms	RRP22
Function	Potent inhibitor of cellular proliferation.
Cellular Location	Cell membrane; Lipid-anchor; Cytoplasmic side. Nucleus, nucleolus. Note=May cycle in and out of the nucleolus in a GTP-dependent manner
Tissue Location	Expression appears to be strictly limited to the central nervous system.

Background

Potent inhibitor of cellular proliferation.

Images



Western Blot analysis of MOUSE-SPLEEN cells using
RRP22 Polyclonal Antibody diluted at 1 : 1000

Please note: All products are 'FOR RESEARCH USE ONLY. NOT FOR USE IN DIAGNOSTIC OR THERAPEUTIC PROCEDURES'.