

SCCA2 Polyclonal Antibody

Catalog # AP72403

Product Information

Application	WB
Primary Accession	P48594
Reactivity	Human
Host	Rabbit
Clonality	Polyclonal
Calculated MW	44854

Additional Information

Gene ID	6318
Other Names	SERPINB4; PI11; SCCA2; Serpin B4; Leupin; Peptidase inhibitor 11; PI-11; Squamous cell carcinoma antigen 2; SCCA-2
Dilution	WB~~Western Blot: 1/500 - 1/2000. ELISA: 1/5000. Not yet tested in other applications.
Format	Liquid in PBS containing 50% glycerol, 0.5% BSA and 0.09% (W/V) sodium azide.
Storage Conditions	-20°C

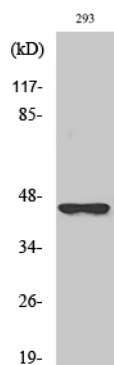
Protein Information

Name	SERPINB4
Synonyms	PI11, SCCA2
Function	May act as a protease inhibitor to modulate the host immune response against tumor cells.
Cellular Location	Cytoplasm. Note=Seems to also be secreted in plasma by cancerous cells but at a low level
Tissue Location	Squamous cells.

Background

May act as a protease inhibitor to modulate the host immune response against tumor cells.

Images



Western Blot analysis of various cells using SCCA2 Polyclonal Antibody

Please note: All products are 'FOR RESEARCH USE ONLY. NOT FOR USE IN DIAGNOSTIC OR THERAPEUTIC PROCEDURES'.