

# SCFD1 Polyclonal Antibody

Catalog # AP72404

## Product Information

---

<b>Application</b>	WB
<b>Primary Accession</b>	<a href="#">Q8WVM8</a>
<b>Reactivity</b>	Human, Mouse, Rat
<b>Host</b>	Rabbit
<b>Clonality</b>	Polyclonal
<b>Calculated MW</b>	72380

## Additional Information

---

<b>Gene ID</b>	23256
<b>Other Names</b>	SCFD1; C14orf163; KIAA0917; STXBP1L2; FKSG23; Sec1 family domain-containing protein 1; SLY1 homolog; Sly1p; Syntaxin-binding protein 1-like 2
<b>Dilution</b>	WB~~Western Blot: 1/500 - 1/2000. ELISA: 1/10000. Not yet tested in other applications.
<b>Format</b>	Liquid in PBS containing 50% glycerol, 0.5% BSA and 0.09% (W/V) sodium azide.
<b>Storage Conditions</b>	-20°C

## Protein Information

---

<b>Name</b>	SCFD1
<b>Synonyms</b>	C14orf163, KIAA0917, STXBP1L2
<b>Function</b>	Plays a role in SNARE-pin assembly and Golgi-to-ER retrograde transport via its interaction with COG4. Involved in vesicular transport between the endoplasmic reticulum and the Golgi (By similarity).
<b>Cellular Location</b>	Cytoplasm. Endoplasmic reticulum membrane; Peripheral membrane protein Golgi apparatus, Golgi stack membrane; Peripheral membrane protein

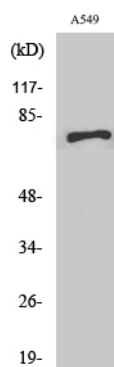
## Background

---

Plays a role in SNARE-pin assembly and Golgi-to-ER retrograde transport via its interaction with COG4. Involved in vesicular transport between the endoplasmic reticulum and the Golgi (By similarity).

## Images

---



Western Blot analysis of various cells using SCFD1 Polyclonal Antibody

Please note: All products are 'FOR RESEARCH USE ONLY. NOT FOR USE IN DIAGNOSTIC OR THERAPEUTIC PROCEDURES'.