

SDHA Polyclonal Antibody

Catalog # AP72409

Product Information

Application	WB
Primary Accession	P31040
Reactivity	Human, Mouse, Rat
Host	Rabbit
Clonality	Polyclonal
Calculated MW	72692

Additional Information

Gene ID	6389
Other Names	SDHA; SDH2; SDHF; Succinate dehydrogenase [ubiquinone] flavoprotein subunit; mitochondrial; Flavoprotein subunit of complex II; Fp
Dilution	WB~~Western Blot: 1/500 - 1/2000. ELISA: 1/10000. Not yet tested in other applications.
Format	Liquid in PBS containing 50% glycerol, 0.5% BSA and 0.09% (W/V) sodium azide.
Storage Conditions	-20°C

Protein Information

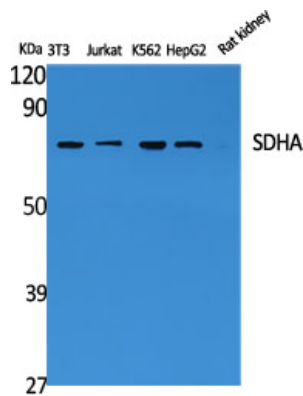
Name	SDHA
Synonyms	SDH2, SDHF
Function	Flavoprotein (FP) subunit of succinate dehydrogenase (SDH) that is involved in complex II of the mitochondrial electron transport chain and is responsible for transferring electrons from succinate to ubiquinone (coenzyme Q) (PubMed: 10746566 , PubMed: 24781757). SDH also oxidizes malate to the non-canonical enol form of oxaloacetate, enol- oxaloacetate (By similarity). Enol-oxaloacetate, which is a potent inhibitor of the succinate dehydrogenase activity, is further isomerized into keto-oxaloacetate (By similarity). Can act as a tumor suppressor (PubMed: 20484225).
Cellular Location	Mitochondrion inner membrane; Peripheral membrane protein; Matrix side

Background

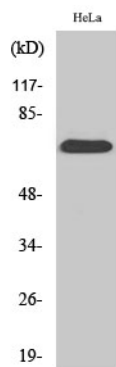
Flavoprotein (FP) subunit of succinate dehydrogenase (SDH) that is involved in complex II of the

mitochondrial electron transport chain and is responsible for transferring electrons from succinate to ubiquinone (coenzyme Q) (PubMed:[24781757](#)). Can act as a tumor suppressor (PubMed:[20484225](#)).

Images



Western Blot analysis of various cells using SDHA
Polyclonal Antibody diluted at 1 : 2000



Western Blot analysis of HepG2 cells using SDHA
Polyclonal Antibody diluted at 1 : 2000

Please note: All products are 'FOR RESEARCH USE ONLY. NOT FOR USE IN DIAGNOSTIC OR THERAPEUTIC PROCEDURES'.