

# Sec23B Polyclonal Antibody

Catalog # AP72412

## Product Information

---

Application	WB
Primary Accession	<a href="#">Q15437</a>
Reactivity	Human, Mouse
Host	Rabbit
Clonality	Polyclonal
Calculated MW	86479

## Additional Information

---

Gene ID	10483
Other Names	SEC23B; Protein transport protein Sec23B; SEC23-related protein B
Dilution	WB~~Western Blot: 1/500 - 1/2000. ELISA: 1/10000. Not yet tested in other applications.
Format	Liquid in PBS containing 50% glycerol, 0.5% BSA and 0.09% (W/V) sodium azide.
Storage Conditions	-20°C

## Protein Information

---

Name	SEC23B ( <a href="#">HGNC:10702</a> )
Function	Component of the coat protein complex II (COPII) which promotes the formation of transport vesicles from the endoplasmic reticulum (ER). The coat has two main functions, the physical deformation of the endoplasmic reticulum membrane into vesicles and the selection of cargo molecules for their transport to the Golgi complex.
Cellular Location	Cytoplasmic vesicle, COPII-coated vesicle membrane {ECO:0000250 UniProtKB:Q15436}; Peripheral membrane protein {ECO:0000250 UniProtKB:Q15436}; Cytoplasmic side {ECO:0000250 UniProtKB:Q15436}. Endoplasmic reticulum membrane; Peripheral membrane protein {ECO:0000250 UniProtKB:Q15436}; Cytoplasmic side {ECO:0000250 UniProtKB:Q15436}. Cytoplasm, cytosol {ECO:0000250 UniProtKB:Q15436}
Tissue Location	Ubiquitously expressed.

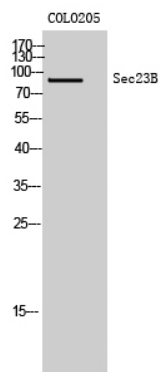
## Background

---

Component of the coat protein complex II (COPII) which promotes the formation of transport vesicles from the endoplasmic reticulum (ER). The coat has two main functions, the physical deformation of the endoplasmic reticulum membrane into vesicles and the selection of cargo molecules for their transport to the Golgi complex.

## Images

---



Western Blot analysis of COLO205 cells using Sec23B Polyclonal Antibody

Please note: All products are 'FOR RESEARCH USE ONLY. NOT FOR USE IN DIAGNOSTIC OR THERAPEUTIC PROCEDURES'.