

# SENP7 Polyclonal Antibody

Catalog # AP72424

## Product Information

Application	WB, IHC-P, IF, ICC, E
Primary Accession	<a href="#">Q9BQF6</a>
Reactivity	Human, Mouse
Host	Rabbit
Clonality	Polyclonal
Calculated MW	119658

## Additional Information

Gene ID	57337
Other Names	SENP7; KIAA1707; SSP2; SUSP2; Sentrin-specific protease 7; SUMO-1-specific protease 2; Sentrin/SUMO-specific protease SENP7
Dilution	WB~~Western Blot: 1/500 - 1/2000. Immunohistochemistry: 1/100 - 1/300. ELISA: 1/40000. Not yet tested in other applications. IHC-P~~N/A IF~~1:50~200 ICC~~N/A E~~N/A
Format	Liquid in PBS containing 50% glycerol, 0.5% BSA and 0.09% (W/V) sodium azide.
Storage Conditions	-20°C

## Protein Information

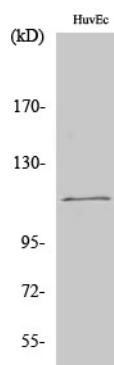
Name	SENP7 {ECO:0000303 Ref.2, ECO:0000312 HGNC:HGNC:30402}
Function	Protease that acts as a positive regulator of the cGAS-STING pathway by catalyzing desumoylation of CGAS. Desumoylation of CGAS promotes DNA-binding activity of CGAS, subsequent oligomerization and activation (By similarity). Deconjugates SUMO2 and SUMO3 from targeted proteins, but not SUMO1 (PubMed: <a href="#">18799455</a> ). Catalyzes the deconjugation of poly-SUMO2 and poly-SUMO3 chains (PubMed: <a href="#">18799455</a> ). Has very low efficiency in processing full-length SUMO proteins to their mature forms (PubMed: <a href="#">18799455</a> ).
Cellular Location	Cytoplasm {ECO:0000250 UniProtKB:Q8BUH8}.

## Background

Protease that deconjugates SUMO2 and SUMO3 from targeted proteins, but not SUMO1. Catalyzes the deconjugation of poly-SUMO2 and poly-SUMO3 chains. Has very low efficiency in processing full-length SUMO proteins to their mature forms.

## Images

---



Western Blot analysis of various cells using SENP7 Polyclonal Antibody cells nucleus extracted by Minute TM Cytoplasmic and Nuclear Fractionation kit (SC-003, Inventbiotech, MN, USA).

Please note: All products are 'FOR RESEARCH USE ONLY. NOT FOR USE IN DIAGNOSTIC OR THERAPEUTIC PROCEDURES'.