

SEN8 Polyclonal Antibody

Catalog # AP72425

Product Information

Application	WB, IHC-P, IF, ICC, E
Primary Accession	Q96LD8
Reactivity	Human, Mouse, Rat
Host	Rabbit
Clonality	Polyclonal
Calculated MW	24107

Additional Information

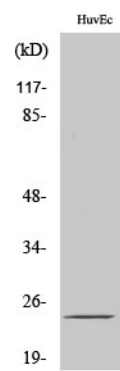
Gene ID	123228
Other Names	SEN8; DEN1; NEDP1; PRSC2; FKSG8; Sentrin-specific protease 8; Deneddylase-1; NEDD8-specific protease 1; Protease; cysteine 2; Sentrin/SUMO-specific protease SEN8
Dilution	WB~~Western Blot: 1/500 - 1/2000. Immunohistochemistry: 1/100 - 1/300. ELISA: 1/10000. Not yet tested in other applications. IHC-P~~N/A IF~~1:50~200 ICC~~N/A E~~N/A
Format	Liquid in PBS containing 50% glycerol, 0.5% BSA and 0.09% (W/V) sodium azide.
Storage Conditions	-20°C

Protein Information

Name	SEN8
Synonyms	DEN1, NEDP1, PRSC2
Function	Protease that catalyzes two essential functions in the NEDD8 pathway: processing of full-length NEDD8 to its mature form and deconjugation of NEDD8 from targeted proteins such as cullins or p53.
Tissue Location	Broadly expressed, with highest levels in kidney and pancreas.

Background

Protease that catalyzes two essential functions in the NEDD8 pathway: processing of full-length NEDD8 to its mature form and deconjugation of NEDD8 from targeted proteins such as cullins or p53.



Western Blot analysis of various cells using SENP8 Polyclonal Antibody

Please note: All products are 'FOR RESEARCH USE ONLY. NOT FOR USE IN DIAGNOSTIC OR THERAPEUTIC PROCEDURES'.