

Separase Polyclonal Antibody

Catalog # AP72426

Product Information

Application	WB, IHC-P, IF
Primary Accession	Q14674
Reactivity	Human, Mouse
Host	Rabbit
Clonality	Polyclonal
Calculated MW	233175

Additional Information

Gene ID	9700
Other Names	ESPL1; ESP1; KIAA0165; Separin; Caspase-like protein ESPL1; Extra spindle poles-like 1 protein; Separase
Dilution	WB~~Western Blot: 1/500 - 1/2000. Immunohistochemistry: 1/100 - 1/300. Immunofluorescence: 1/200 - 1/1000. ELISA: 1/40000. Not yet tested in other applications. IHC-P~~N/A IF~~1:50~200
Format	Liquid in PBS containing 50% glycerol, 0.5% BSA and 0.09% (W/V) sodium azide.
Storage Conditions	-20°C

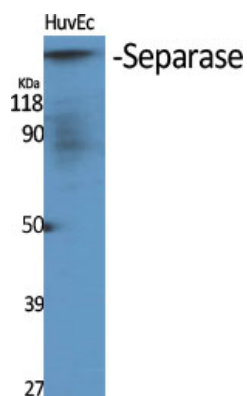
Protein Information

Name	ESPL1
Synonyms	ESP1, KIAA0165
Function	Caspase-like protease, which plays a central role in the chromosome segregation by cleaving the SCC1/RAD21 subunit of the cohesin complex at the onset of anaphase. During most of the cell cycle, it is inactivated by different mechanisms.
Cellular Location	Cytoplasm. Nucleus.

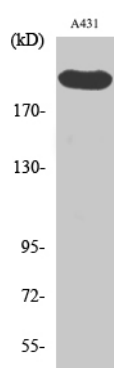
Background

Caspase-like protease, which plays a central role in the chromosome segregation by cleaving the SCC1/RAD21 subunit of the cohesin complex at the onset of anaphase. During most of the cell cycle, it is inactivated by different mechanisms.

Images



Western Blot analysis of various cells using Separase
Polyclonal Antibody diluted at 1 : 1000



Western Blot analysis of A431 cells using Separase
Polyclonal Antibody diluted at 1 : 1000

Please note: All products are 'FOR RESEARCH USE ONLY. NOT FOR USE IN DIAGNOSTIC OR THERAPEUTIC PROCEDURES'.