

Septin 1 Polyclonal Antibody

Catalog # AP72428

Product Information

Application	WB, IHC-P
Primary Accession	Q8WYJ6
Reactivity	Human, Mouse, Rat
Host	Rabbit
Clonality	Polyclonal
Calculated MW	42386

Additional Information

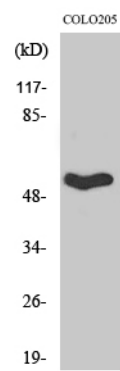
Gene ID	1731
Other Names	SEPT1; DIFF6; PNUTL3; Septin-1; LARP; Peanut-like protein 3; Serologically defined breast cancer antigen NY-BR-24
Dilution	WB~~Western Blot: 1/500 - 1/2000. Immunohistochemistry: 1/100 - 1/300. ELISA: 1/20000. Not yet tested in other applications. IHC-P~~N/A
Format	Liquid in PBS containing 50% glycerol, 0.5% BSA and 0.09% (W/V) sodium azide.
Storage Conditions	-20°C

Protein Information

Name	SEPTIN1 (HGNC:2879)
Synonyms	DIFF6, PNUTL3, SEPT1
Function	Filament-forming cytoskeletal GTPase (By similarity). May play a role in cytokinesis (Potential).
Cellular Location	Cytoplasm. Cytoplasm, cytoskeleton. Cytoplasm, cytoskeleton, microtubule organizing center, centrosome. Midbody. Note=Remains at the centrosomes and the nearby microtubules throughout mitosis. Localizes to the midbody during cytokinesis
Tissue Location	Expressed at high levels in lymphoid and hematopoietic tissues.

Background

Filament-forming cytoskeletal GTPase (By similarity). May play a role in cytokinesis (Potential).



Western Blot analysis of various cells using Septin 1 Polyclonal Antibody

Please note: All products are 'FOR RESEARCH USE ONLY. NOT FOR USE IN DIAGNOSTIC OR THERAPEUTIC PROCEDURES'.