

# Septin 8 Polyclonal Antibody

Catalog # AP72435

## Product Information

Application	WB
Primary Accession	<a href="#">Q92599</a>
Reactivity	Human, Mouse, Rat
Host	Rabbit
Clonality	Polyclonal
Calculated MW	55756

## Additional Information

Gene ID	23176
Other Names	SEPT8; KIAA0202; Septin-8
Dilution	WB~~Western Blot: 1/500 - 1/2000. ELISA: 1/10000. Not yet tested in other applications.
Format	Liquid in PBS containing 50% glycerol, 0.5% BSA and 0.09% (W/V) sodium azide.
Storage Conditions	-20°C

## Protein Information

Name	SEPTIN8 ( <a href="#">HGNC:16511</a> )
Function	Filament-forming cytoskeletal GTPase (By similarity). May play a role in platelet secretion (PubMed: <a href="#">15116257</a> ). Seems to participate in the process of SNARE complex formation in synaptic vesicles (By similarity).
Cellular Location	Cytoplasm {ECO:0000250 UniProtKB:B0BNF1}. Cytoplasm, cytoskeleton. Synapse {ECO:0000250 UniProtKB:B0BNF1}. Cell projection, axon {ECO:0000250 UniProtKB:B0BNF1}. Cytoplasmic vesicle, secretory vesicle, synaptic vesicle membrane {ECO:0000250 UniProtKB:B0BNF1}. Presynapse {ECO:0000250 UniProtKB:B0BNF1}. Note=Expressed in axons of immature neurons, localizes to synapses in mature neurons (By similarity). In platelets, found in areas surrounding alpha-granules (PubMed: <a href="#">15116257</a> ) {ECO:0000250 UniProtKB:B0BNF1, ECO:0000269 PubMed: <a href="#">15116257</a> }
Tissue Location	Widely expressed, including in brain, heart and platelets; most abundant in aorta. Isoform 2 is expressed at low levels in specific brain areas, such as occipital pole, frontal lobe, temporal lobe and putamen. Isoform 1 and 3 are highly expressed in specific brain areas, such as occipital pole, frontal lobe, temporal lobe and putamen. Isoform 2 is highly expressed in prostate, testis

and ovary Isoform 1 and isoform 3 are expressed at low levels in prostate, testis and ovary.

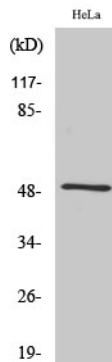
## Background

---

Filament-forming cytoskeletal GTPase (By similarity). May play a role in platelet secretion (PubMed:[15116257](#)). Seems to participate in the process of SNARE complex formation in synaptic vesicles (By similarity).

## Images

---



Western Blot analysis of various cells using Septin 8 Polyclonal Antibody diluted at 1 : 2000

Please note: All products are 'FOR RESEARCH USE ONLY. NOT FOR USE IN DIAGNOSTIC OR THERAPEUTIC PROCEDURES'.