

# Serinc1 Polyclonal Antibody

Catalog # AP72438

## Product Information

---

Application	WB, IHC-P, IF, ICC, E
Primary Accession	<a href="#">Q9NRX5</a>
Reactivity	Human, Mouse, Rat
Host	Rabbit
Clonality	Polyclonal
Calculated MW	50495

## Additional Information

---

Gene ID	57515
Other Names	SERINC1; KIAA1253; TDE1L; TDE2; Serine incorporator 1; Tumor differentially expressed protein 1-like; Tumor differentially expressed protein 2
Dilution	WB~~Western Blot: 1/500 - 1/2000. Immunohistochemistry: 1/100 - 1/300. Immunofluorescence: 1/200 - 1/1000. ELISA: 1/20000. Not yet tested in other applications. IHC-P~~N/A IF~~1:50~200 ICC~~N/A E~~N/A
Format	Liquid in PBS containing 50% glycerol, 0.5% BSA and 0.09% (W/V) sodium azide.
Storage Conditions	-20°C

## Protein Information

---

Name	SERINC1
Synonyms	KIAA1253, TDE1L, TDE2
Function	Enhances the incorporation of serine into phosphatidylserine and sphingolipids.
Cellular Location	Endoplasmic reticulum membrane {ECO:0000250   UniProtKB:Q7TNK0}; Multi-pass membrane protein {ECO:0000250   UniProtKB:Q7TNK0}

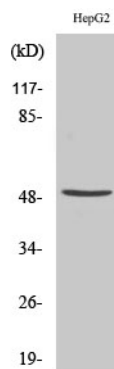
## Background

---

Enhances the incorporation of serine into phosphatidylserine and sphingolipids.

## Images

---



Western Blot analysis of various cells using Serinc1 Polyclonal Antibody

Please note: All products are 'FOR RESEARCH USE ONLY. NOT FOR USE IN DIAGNOSTIC OR THERAPEUTIC PROCEDURES'.