

# STK35 Antibody (Center)

Purified Rabbit Polyclonal Antibody (Pab)

Catalog # AP7243c

## Product Information

---

<b>Application</b>	WB, IHC-P, E
<b>Primary Accession</b>	<a href="#">Q8TDR2</a>
<b>Other Accession</b>	<a href="#">Q80ZW0</a>
<b>Reactivity</b>	Human, Mouse
<b>Host</b>	Rabbit
<b>Clonality</b>	Polyclonal
<b>Isotype</b>	Rabbit IgG
<b>Clone Names</b>	RB3600
<b>Calculated MW</b>	58051
<b>Antigen Region</b>	374-404

## Additional Information

---

<b>Gene ID</b>	140901
<b>Other Names</b>	Serine/threonine-protein kinase 35, CLP-36-interacting kinase 1, CLIK-1, PDLIM1-interacting kinase 1, Serine/threonine-protein kinase 35 L1, STK35, CLIK1, PDIK1, STK35L1
<b>Target/Specificity</b>	This STK35 antibody is generated from rabbits immunized with a KLH conjugated synthetic peptide between 374-404 amino acids from the Central region of human STK35.
<b>Dilution</b>	WB~~1:1000 IHC-P~~1:100~500 E~~Use at an assay dependent concentration.
<b>Format</b>	Purified polyclonal antibody supplied in PBS with 0.09% (W/V) sodium azide. This antibody is prepared by Saturated Ammonium Sulfate (SAS) precipitation followed by dialysis against PBS.
<b>Storage</b>	Maintain refrigerated at 2-8°C for up to 2 weeks. For long term storage store at -20°C in small aliquots to prevent freeze-thaw cycles.
<b>Precautions</b>	STK35 Antibody (Center) is for research use only and not for use in diagnostic or therapeutic procedures.

## Protein Information

---

<b>Name</b>	STK35
<b>Synonyms</b>	CLIK1, PDIK1, STK35L1

<b>Cellular Location</b>	Nucleus. Nucleus, nucleolus. Cytoplasm. Note=When associated with PDLIM1, it is mostly found in cytoplasm, localized to actin stress fibers (PubMed:11973348). However, PubMed:19756140 detected STK35 only in the nucleus, and the presence of PDLIM1 had no influence on its location.
<b>Tissue Location</b>	Expressed in testis.

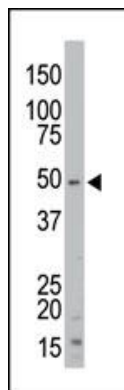
## Background

STK35 can interact with PDLIM1/CLP-36 in the cytoplasm and localize to actin stress fibers. The encoded kinase may be a regulator of actin stress fibers in nonmuscle cells. This protein has also been found in the nucleus.

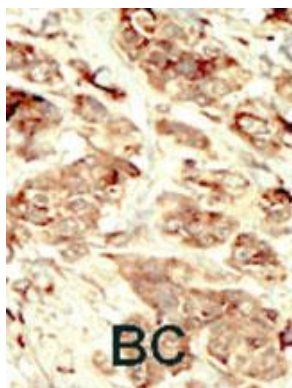
## References

Vallenius, T., et al., J. Cell. Sci. 115 (Pt 10), 2067-2073 (2002).

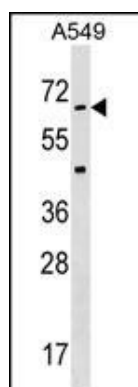
## Images



The anti-STK35 Pab (Cat. #AP7243c) is used in Western blot to detect STK35 in mouse kidney tissue lysate.



Formalin-fixed and paraffin-embedded human cancer tissue reacted with the primary antibody, which was peroxidase-conjugated to the secondary antibody, followed by DAB staining. This data demonstrates the use of this antibody for immunohistochemistry; clinical relevance has not been evaluated. BC = breast carcinoma; HC = hepatocarcinoma.



STK35 Antibody (C255) (Cat. #AP7243c) western blot analysis in A549 cell line lysates (35ug/lane). This demonstrates the STK35 antibody detected the STK35 protein (arrow).

Please note: All products are 'FOR RESEARCH USE ONLY. NOT FOR USE IN DIAGNOSTIC OR THERAPEUTIC PROCEDURES'.